

TO: Kristina Doan, ISBE
Ann Freiburg, IDHS
Colleen Cunningham, IDHS
Jennifer Grissom, IDHS
All CFC Managers
Andria Goss, Cook County DCFS
Davette Clark-Johnson, CPS
Kelsey Badger, Erikson Institute's DCFS Intact Program
Allison Lowe-Fotos, Ounce of Prevention Fund
Carmen Garcia, Ounce of Prevention Fund
Karen Berman, Ounce of Prevention Fund
Kayla Goldfarb, Ounce of Prevention Fund

DATE: July 20, 2021

RE: FY 2021 Q3 Developmental Screening Report

Enclosed within are Child Find developmental screening reports and maps reflecting the number of children reported as screened from January 1, 2021 through March 31, 2021 throughout the State of Illinois. Please note that IDHS County Health Department (CHD) data is *not* included. When available, it will be located at <http://www.dhs.state.il.us/page.aspx?item=33422>. We hope to reintegrate this data going forward.

TABLE OF CONTENTS

Narrative	2
Sample Form	4
Directions for Completing Form	5
Data Mappings	8
Screenings Reported by ZIP Code	14
Screenings Reported by Month	24
Screenings Reported by Agencies Represented	29
Screenings Reported by Screening Tool Utilized	32

This report, as well as reports reflecting prior years, is made publicly available on our website at <https://www.childfind-idea-il.us/Screening.aspx>. If you have any questions or concerns about the enclosed information, please feel free to reach out via the contact form on our website at <https://www.childfind-idea-il.us/Contact.aspx> or call (800) 851-6197, option 2.

Best Regards,



Denise Stricklin
Child Find Project Coordinator

Child Find Project Data Collection Mappings

Background

Since 1998, the Illinois State Board of Education (ISBE) has operated the Child Find Project (Child Find), funded through Individuals with Disabilities Education Act Part B, Preschool Discretionary funds to develop and disseminate public awareness materials to Local Education Agencies (LEAs), Special Education Cooperatives, and the Child and Family Connections (CFC) offices.

The Child Find Project, managed by a single Program Coordinator, collects data on the number and location of developmental screenings taking place across Illinois for children between 0 to 5 years of age. A developmental screening is the use of screening tools to track the development of young children across multiple domains. Child Find receives:

- Data from the 25 CFC sites across Illinois. CFCs are the system point of entry for Early Intervention under the Illinois Department of Human Services (IDHS), and are required to report data to Child Find. CFCs receive data from local school districts, with the exception of Chicago Public School (CPS) District #299, where data is reported directly to Child Find.
- Quarterly data on screenings from all health departments reporting to IDHS, which is obtained from the Cornerstone data entry system (Cornerstone).
- Department of Children and Family Services (DCFS) Cook County for children birth to five who are in care. These screenings are conducted by Erikson Institute (Erikson) /DCFS Early Childhood developmental specialists or by the DCFS Integrated Assessment program.
- Monthly data from Erikson/ DCFS Early Childhood Intact Program for Cook, Northern, Central and Southern regions. Erikson/DCFS Early Childhood developmental specialists administer developmental screenings to children ages birth through three entering the foster care system in Cook County and coordinates assessments statewide. The data is not separated by zip codes but reported by the four DCFS regions.

Through the support of the Early Learning Council, the *0-5 Child Find Screening Data Collection Form* (Data Collection Form) used by reporting entities was updated in 2016 in an effort to gather improved information on referral counts, screening tools used, type of reporting program/entity and the type of referral. Among these improvements, a new field was added to include the zip code of locations performing developmental screenings. The inclusion of this field allows for the mapping of portrays where screenings occur, identify potential gaps in reporting and referrals and make the data useful for stakeholders.

Mappings

Child Find has partnered with the Illinois Early Childhood Asset Map (IECAM) to display, through geo-mapping, where developmental screenings are occurring as reported on the Data Collection Form. Developed in 2006, IECAM is funded by ISBE and the IDHS to provide information on existing services, the demographics of young children and their families, and state resources that serve young children. Child Find provides quarterly reports to IECAM which in turn provides mappings on 0-5 Child Find Screenings:

- Total Screened by CFC region
- Total Referred by CFC region

- Total Screened by Zip Code
- Total Referred by Zip Code

Limitations and exclusions

There is no data system to support unduplicated, disaggregated child level data collection, but the addition of the zip code field draws a broader picture of screenings occurring in the state. Even with the stated improvements to the Data Collection Form, limitations remain:

- Reporting to CFCs is voluntary and reporting entities include: school districts, Local Education Agencies (LEAs), Special Education Cooperatives, Regional Offices of Education, child care providers, Head Start/Early Head Start, Home Visiting programs, Early Intervention providers, health departments, health care providers, DCFS, IDHS Family Case Management, multi-funded programs, and Women, Infants and Children.
- CFCs 8, 9, 10 and 11 serve the City of Chicago but do not conduct screening events – Chicago Public Schools (CPS) #299 coordinates all screenings in these regions. It is up to CPS to report the screenings conducted, and data is not broken down by CFC region or even zip code.
- Reporting entities submit data manually through paper forms. CFCs vary greatly in the frequency and method of reporting data to Child find: Some CFCs email forms to the Project Coordinator as forms are received and other CFCs collect forms throughout a quarter before submitting them all at once via US Mail or fax.
- Delayed reporting from entities to CFCs impacts the timeliness of data to Child Find. CFCs do not all report information to Child Find in regular intervals.
- Data collection is time consuming and complex for both reporting entities and CFCs. Data is often inconsistent and unreliable because not all relevant fields are completed and mathematical miscalculations are recorded in fields. As of May 1, 2018, Child Find is piloting an electronic data collection system with two CFCs. This system would notify reporting entities when a mistake has been entered, prompting a correction before data submission is allowed.
- IDHS does not report data on developmental screenings by zip code. Rather, quarterly Cornerstone data is reported to Child Find in an aggregate format. This constitutes a significant sector of data that cannot be mapped.
- The data is not available in real-time but delayed by at least one quarter.
- The zip code on the Data Collection Form refers to where the screening occurred, not necessarily the home zip code of the children receiving the screening.

Even with limitations, the mappings make the data transparent and provides utility for stakeholders as a quality improvement process. As state agencies, programs, and communities continue to employ developmental screenings as a tool to support children’s development and school readiness, these mappings visually display areas in the state that might be underreporting screenings and need additional supports to increase screenings and referrals. Further, the wide dissemination of the mappings raise awareness of Child Find which may lead to better reporting by both entities and CFCs. Additional fields were added to the Data Collection Form beyond the zip code and future mappings are possible in the future.

0-5 CHILD FIND SCREENING DATA COLLECTION FORM

Please refer to the directions when completing this form.

SECTION I: IDENTIFYING INFORMATION

Current Date: _____	Month/Year of Screenings: _____	CFC Submitting Form: _____
Name of Screening Agency: _____		
Type of Program/Entity ¹ : _____	Zip Code of Locations of Screenings: _____	
Screening Tool(s) used: _____		
Contact Person's Name: _____	Phone Number: _____	
Email Address: _____		

If the screening was part of a shared screening event, please check the following box: ☐

SECTION II: SCREENING INFORMATION

Report Totals								
Total Children Screened	Age 0-11 months	Age 12-23 months	Age 24-35 months	Age 36-47 months	Age 48-60 months	Age 61+ months	Not Referred	Total Referred

Screenings of Children involved with DCFS		
# of Children in Intact Family Services Screened	# of Children of Teen Wards Screened	# of Children in Foster Care Screened

SECTION III: SCREENING RESULTS – REFERRAL COUNTS²

Report Totals for Children Ages 0 – 35 Months								
# Referred to EI	# Referred to LEA (ECSE)	# Referred to EHS	# Referred to PI (center-based)	# Referred to Child Care Program	# Referred to HV	# Referred to Other Services	# Referred to Multiple Services	# Referred for Rescreening

Report Totals for Children Ages 36 – 60 Months							
# Referred to LEA (ECSE)	# Referred to PFA	# Referred to HS	# Referred to Child Care Program	# Referred to HV	# Referred to Other Services	# Referred to Multiple Services	# Referred for Rescreening

Please fax or email completed form(s) by _____ (insert timeframe) to your local Child and Family Connections (CFC) office at the following contact information: _____.

You may find your local CFC office by going to the Illinois Department of Human Services office locator at www.dhs.state.il.us. If you have questions regarding this form, please contact the Child Find Project at 1-800-851-6197.

¹ Child Care Provider (CC), Head Start/Early Head Start (HS/EHS), Home Visiting (HV), Multi-Funded Program (MFP), Child and Family Connections (CFC), School District or Local Education Agency (LEA), Early Intervention (EI) Provider, Health Department (HD), Health Care Provider (HC), Women, Infants and Children (WIC), Illinois Department of Children and Family Services (DCFS) or Family Case Management (FCM).

² The following are abbreviations used in SECTION III: EI = Early Intervention; EHS = Early Head Start; PI = Prevention Initiative; HV = Home Visiting; PFA = Preschool for All; and HS = Head Start.

DIRECTIONS FOR COMPLETING 0-5 CHILD FIND SCREENING, REPORTING AND DATA COLLECTION FORM

The Illinois State Board of Education (ISBE) operates the Child Find Project (the “Project”). The Project is funded through IDEA Part B, Preschool Discretionary funds to develop and disseminate public awareness materials to Local Education Agencies (LEAs), Special Education Cooperatives, and the Child and Family Connections (CFC) offices. One activity of the Project is to collect data on the number and location of developmental screenings taking place across the State of Illinois for children between 0 and 5 years of age. The purpose of the 0-5 Child Find Screening, Reporting and Data Collection Form (the “Form”) is the collection of said data by the Project. If your program administers developmental screenings, you should report screening data to the Project using the Form. This applies to developmental screenings only and not to other types of screenings, such as those for vision or hearing. Agencies are required to complete each section of the Form.

The following are certain definitions that may be useful when completing the Form:

Health Department – A certified public health department of a county or the City of Chicago that strives to meet the public health needs of its jurisdiction.

Health Care Provider – A primary care physician, clinic, etc.

Home Visiting – A voluntary program serving pregnant women and children up to the age of 5 that promotes positive parenting practices and builds healthy parent-child relationships, which makes them an essential strategy for reducing child abuse and neglect, improving health outcomes for mothers and children, and increasing school readiness. Home visiting services use evidence-based, intensive, outcome-driven models that promote parent-child attachment; provide developmental screening, monitoring, and referrals; and provide linkages to community resources and services. Additional information pertaining to home visiting in Illinois can be found at <http://www.igrowillinois.org/>.

Multi-Funded Program – A program receiving separate funds from two or more program funding streams that are integrated or blended in order to pay for total program expenditures.

SECTION I: IDENTIFYING INFORMATION

This information allows the tracking of locations of screenings that occur, what programs or entities are involved in screenings, at what frequency screenings occur in a particular area, and who participates in screening activities.

Current Date – Insert the date the screening form is completed.

Month/Year of Screening – For cumulative reporting, insert the month and year the screenings took place.

CFC Submitting Form – CFCs should insert their CFC #, if a CFC is submitting a completed form.

Name of Screening Agency – Insert the name of the agency or provider undertaking the screening. Please note that such an agency or provider may include, but is not limited to, the following: Child Care Provider (CC); Head Start/Early Head Start (HS/EHS); Home Visiting (HV); Multi-Funded Program (MFP); Child and Family Connections (CFC); School District or Local Education Agency (LEA); Early Intervention (EI) Provider; Health Department (HD); Health Care Provider (HC); Women, Infants and

Children (WIC); Illinois Department of Children and Family Services (DCFS); or Family Case Management (FCM).

This information is gathered for data collection purposes only. If the screening is a joint effort between two or more CFCs or two or more school districts, indicate all CFCs and school districts involved in the joint effort, in order to show the area in which screenings are taking place. If a joint screening takes place with a CFC and a school district, the screenings will be attributed to the CFC or school district based on the ages of the children screened. Separate reports may be submitted if easier on reporting entities.

Type of Program/Entity – Insert the type of program or entity that describes the Screening Agency. Options include the following: Child Care Provider (CC); Head Start/Early Head Start (HS/EHS); Home Visiting (HV); Multi-Funded Program (MFP); Child and Family Connections (CFC); School District or Local Education Agency (LEA); Early Intervention (EI) Provider; Health Department (HD); Health Care Provider (HC); Women, Infants and Children (WIC); Illinois Department of Children and Family Services (DCFS); or Family Case Management (FCM).

Zip Code of the Locations of Screenings – Identify the zip code of the location of the screening event. One form should be submitted per event, as such, only one zip code should be entered here.

Screening Tool – Identify name of Developmental Screening tool(s) administered (e.g., ASQ3, ASQ-SE, DIAL, Brigance, other) by listing all that apply on the Form. Do not include other screenings performed such as Vision, Hearing, etc.

Contact Person (Name, Phone Number and Email Address) – Insert the name, telephone number and email address of the individual in charge of the screening session.

Name of Agency – List agency(ies) or individual provider(s) conducting the screening activity(ies), if screening event is community-wide or a joint-effort.

SECTION II: SCREENING INFORMATION

This information allows the tracking of the number of children screened and their age at the time of screening. Please note that the data for Section II refers to the total number of children screened (and is not separated out by zip codes as in Section I above).

Total Children Screened – Total number of children screened during event of cumulative monthly report.

Age 0-61+ Months – In the appropriate box, indicate the number of children by age who were screened.

Not Referred – Children who were screened but no referral was needed.

Total Referred – Children who were screened and a referral was needed.

The “Total Children Screened” count in Section II of the Form should equal the number of children referred *plus* the number of children not referred.

For purposes of the Form, a **Referral** occurs when a provider completes a screening and provides

information on how to connect families to a service provider that can meet the child and family's needs as indicated on the screening. Guidance on *referring families* may be found at the websites for (i) ExceleRate Illinois (including, the following link: <http://www.exceleRateillinoisproviders.com/docman/resources/91-three-steps-to-screening/file>) and (ii) U.S. Department of Health and Family Services—Office of Administration for Children and Families for *Birth to 5: Watch Me Thrive!* (including, the following link: https://www.acf.hhs.gov/sites/default/files/ece/ece_providers_guide_march2014.pdf)

For purposes of data related to the screenings of children involved with DCFS (which is collected in the second table in Section II), please note the following:

of Children in Intact Family Services Screened – refers to the number of children screened who are involved with DCFS but are not in DCFS protective custody and are residing with their families as part of DCFS's Intact Families program.

of Children of Teen Wards Screened – refers to the number of children screened whose parents are wards of DCFS.

of Children in Foster Care Screened – refers to the number of children screened who are in DCFS care and residing with a foster family.

SECTION III: SCREENING RESULTS – REFERRAL COUNTS

The information submitted here allows the tracking of referrals made for children ages 0-35 months and 36-50 months.

Indicate the number of children referred for further evaluation in the appropriate referral count box identified. If a referral type is not listed, please indicate the name of the agency(ies) receiving referral(s) and the number of children involved. Please note that the numbers used in Section III will overlap and will not always match-up to the number used in the category of "Total Referred" in Section II above.

Referred to Other Services – Indicate the number of children referred to community based programs/agencies (i.e., speech, hearing, vision).

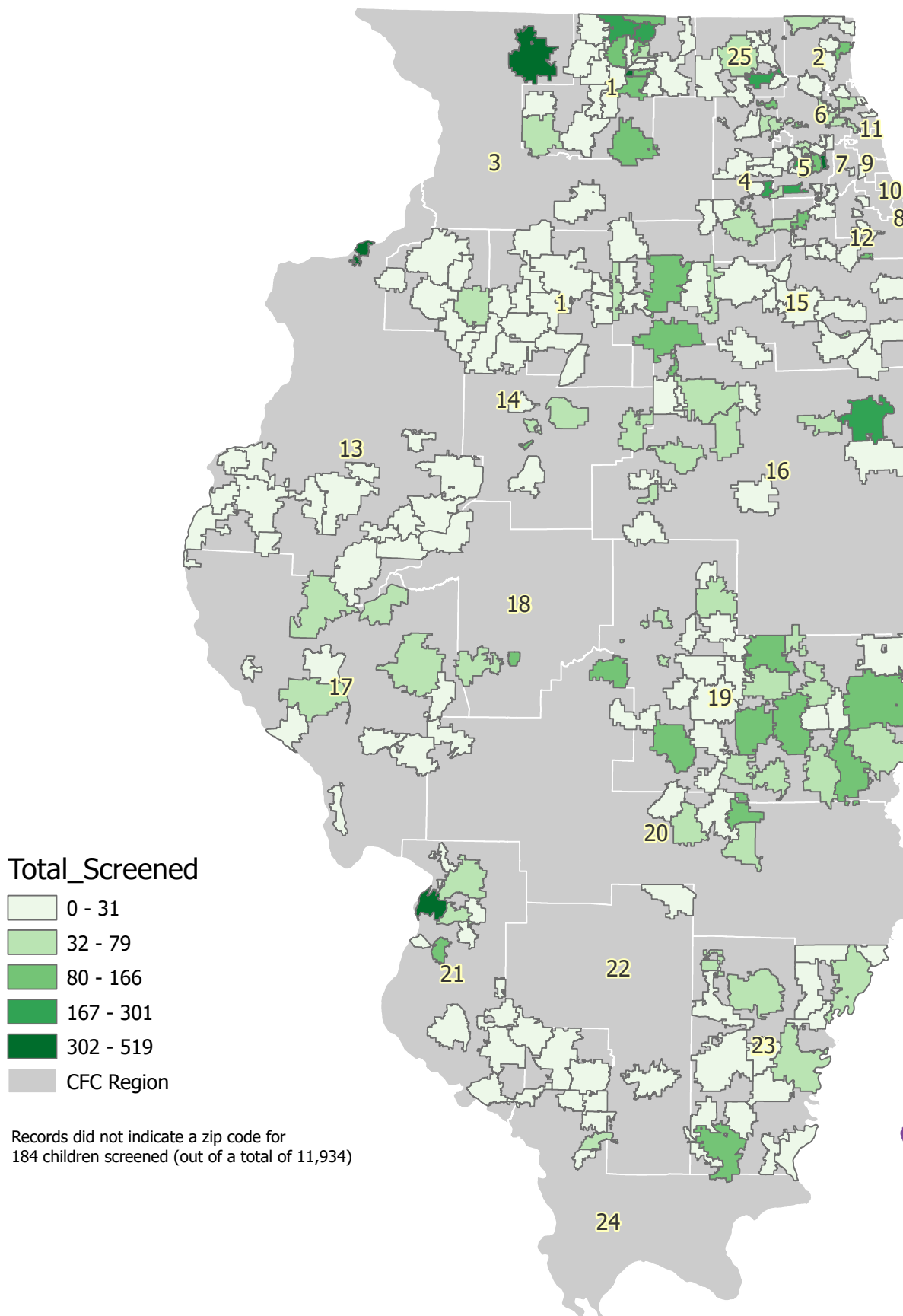
Referred for Rescreening – Indicate the number of children who did not score a concern on the screening, but are determined to benefit from a repeat screening at a later date (due to parent report of functioning variance, unable to screen, other concerns screener may have, etc.).

Referred to Multiple Services – If more than one of the other categories in this Section III has been checked, then also check "Referred for Multiple Services". *Please note that some children may be referred to multiple services and we want to know how many children present like that.*

Please **fax or email** completed reports to the local Child and Family Connections (CFC) office, attention Local Interagency Council (LIC) Coordinator. The LIC Coordinator is responsible for collecting all 0-5 Screening Collection forms relating to screening activities for children 0-5 years of age occurring in the service area. These reports are forwarded monthly to the State's Child Find Project Coordinator for statewide analysis and data compilation.

Child Find Screening FY2021, Q3

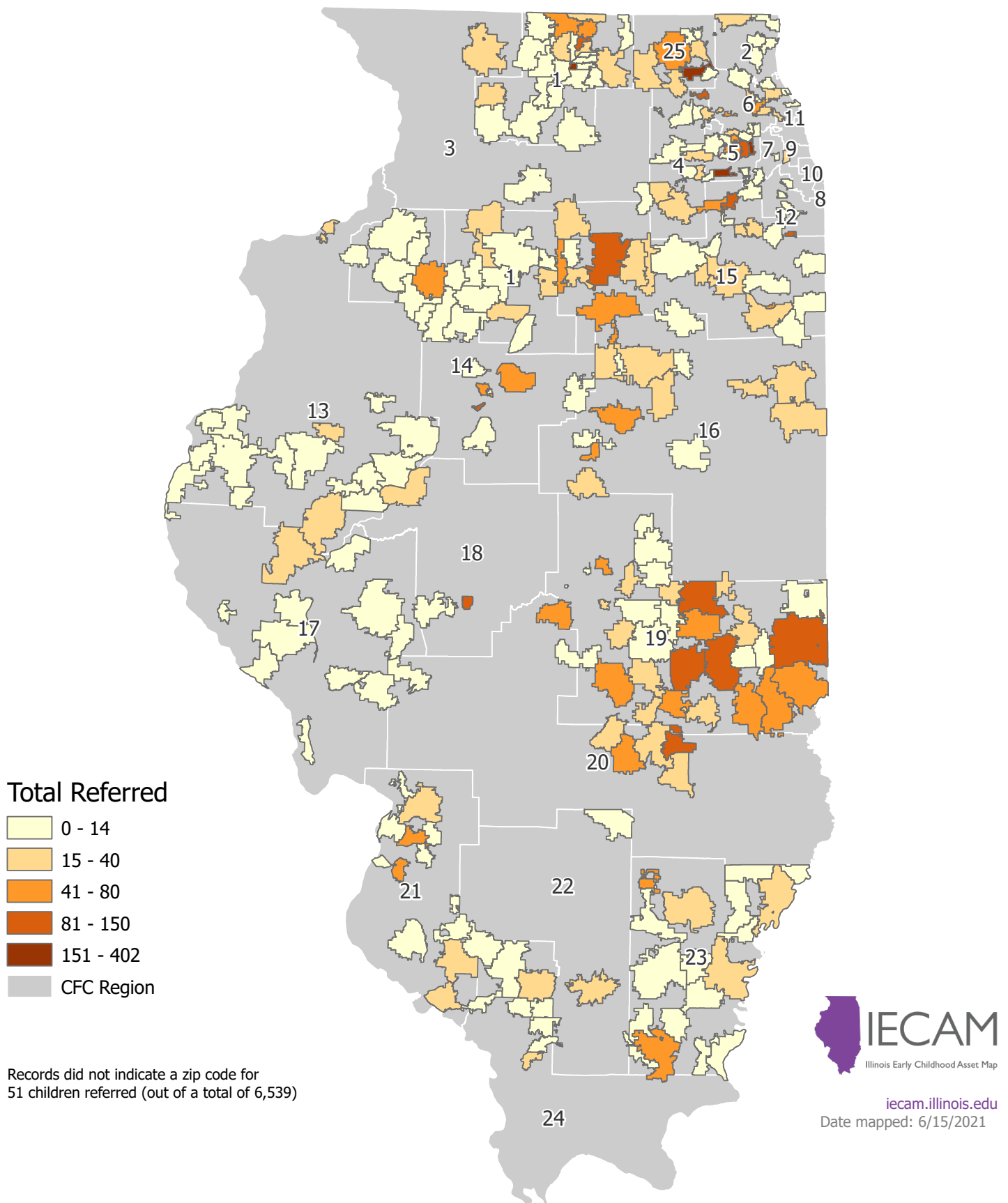
Total children birth to 5 years old screened, zip code



iecam.illinois.edu
Date mapped: 6/15/2021

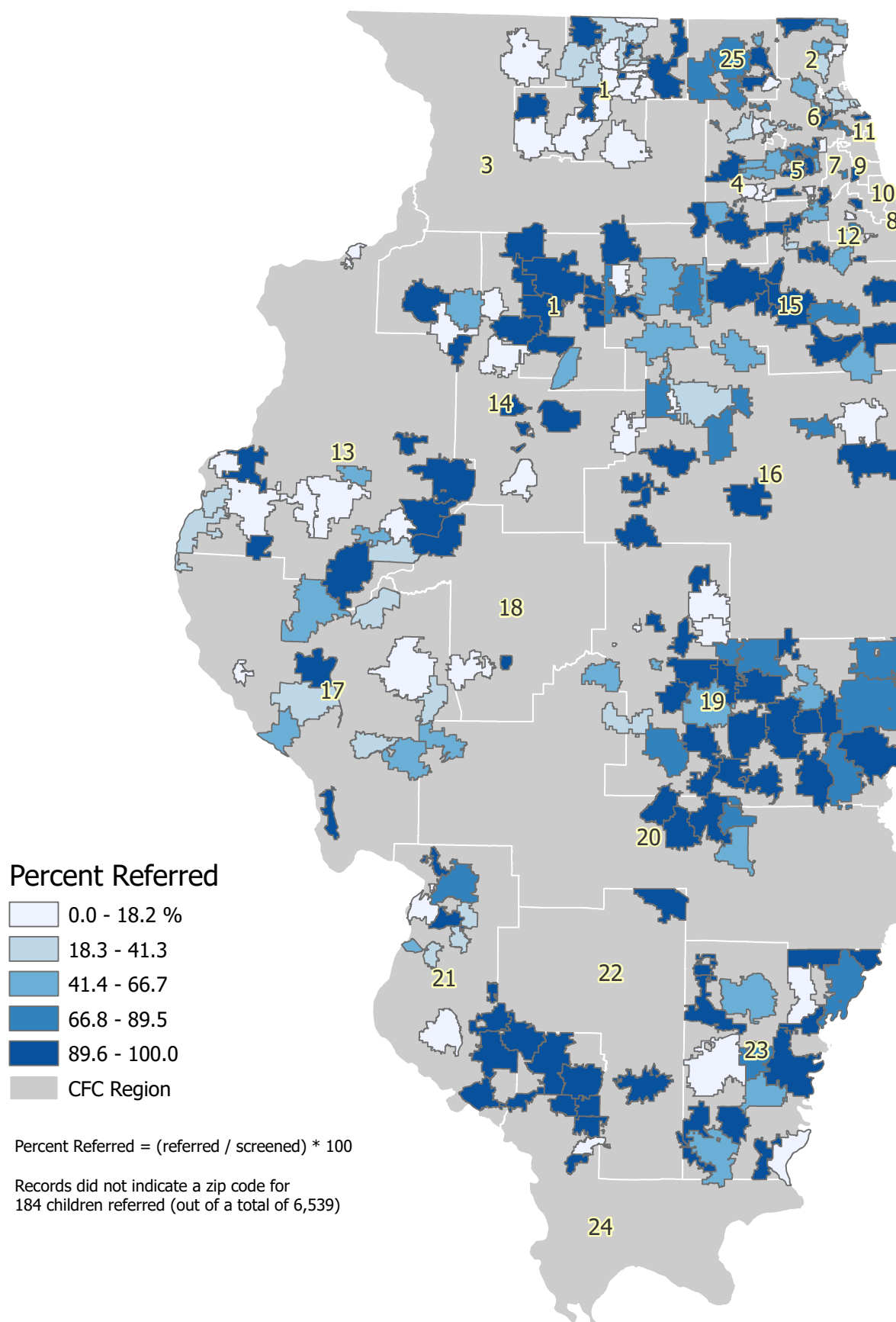
Child Find Screening FY2021, Q3

Total children birth to 5 years old referred, zip code



Child Find Screening FY2021, Q3

Percent children referred, zip code

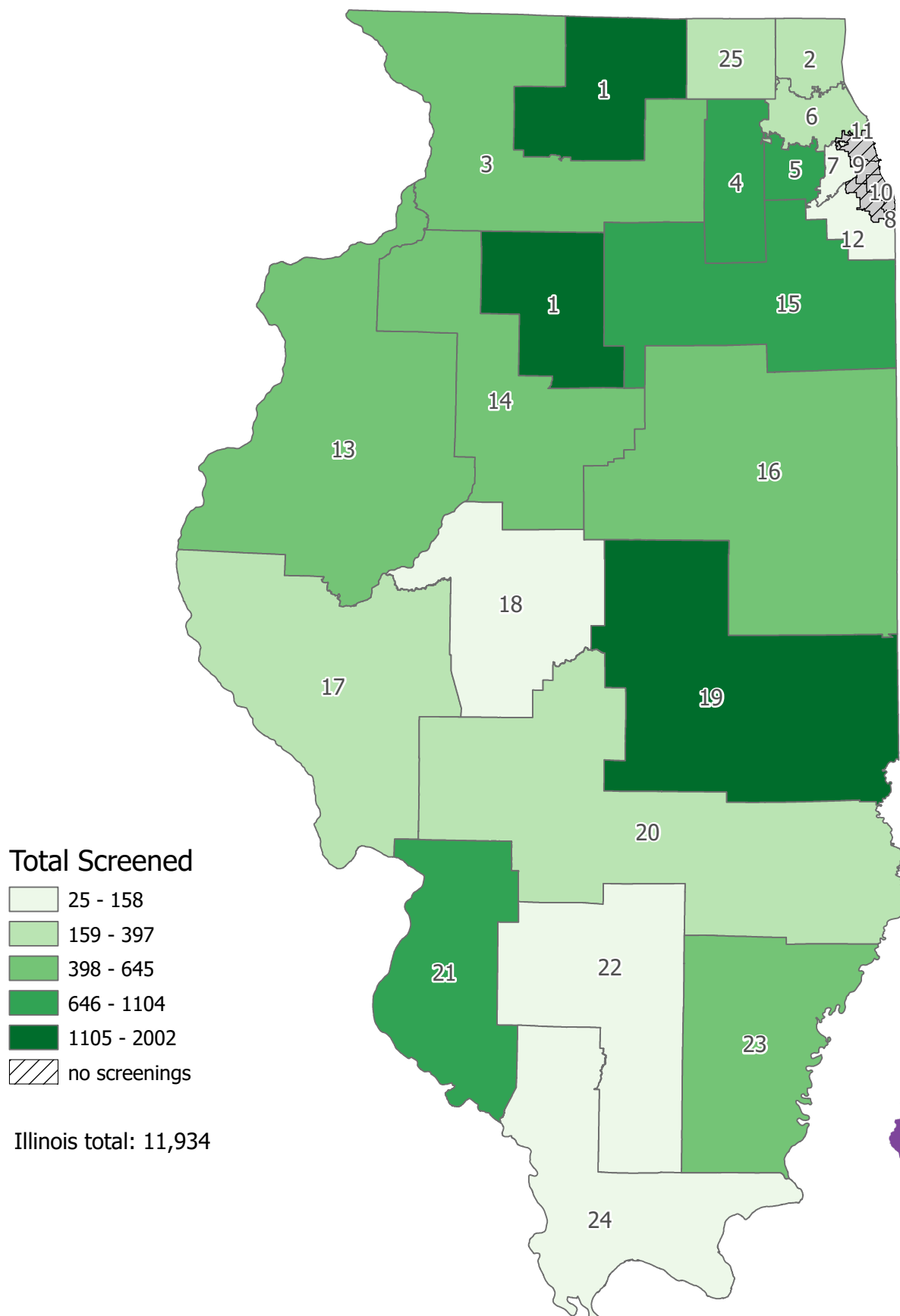


iecam.illinois.edu

Date mapped: 6/15/2021

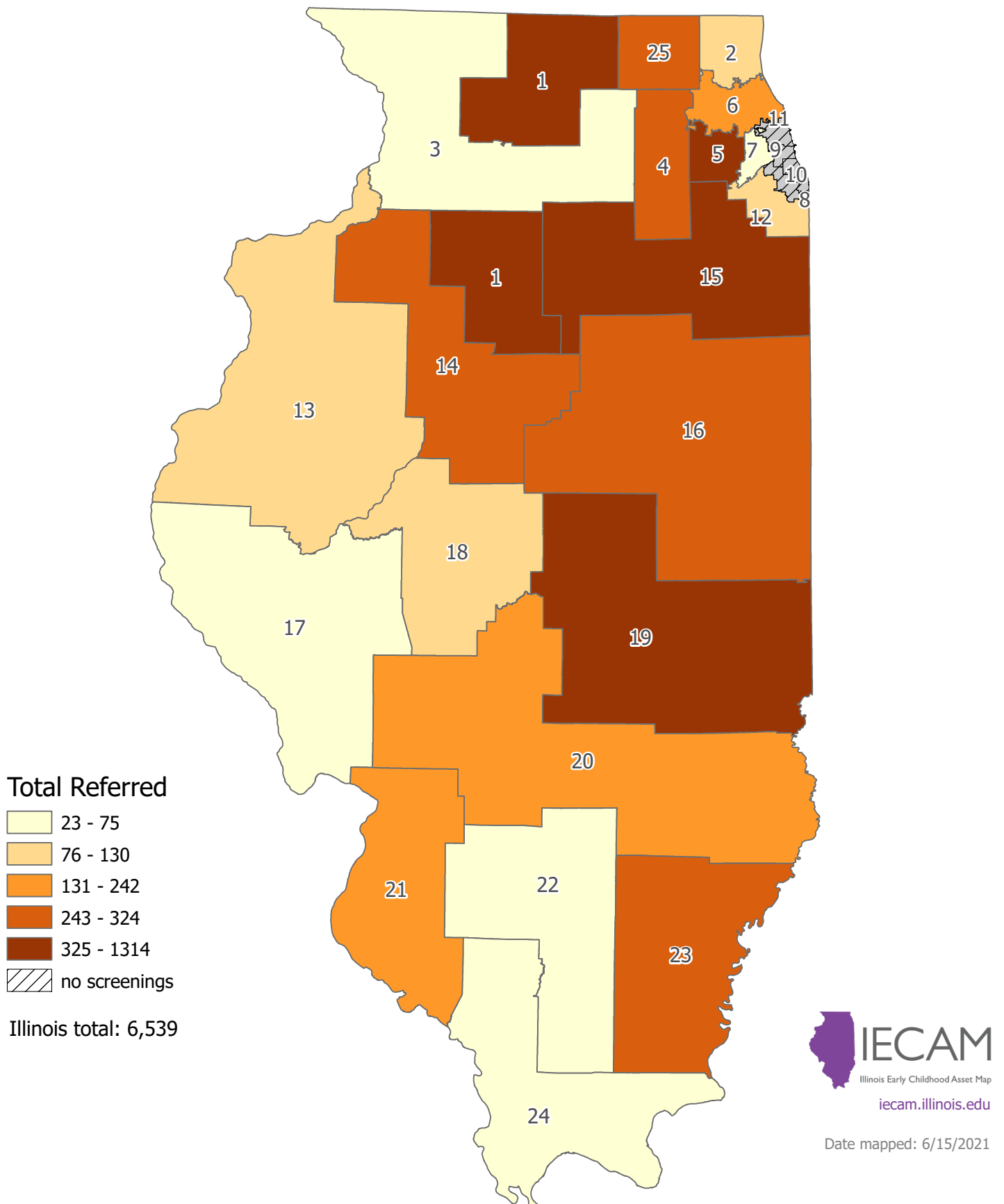
Child Find Screening FY2021, Q3

Total children birth to 5 screened, CFC region



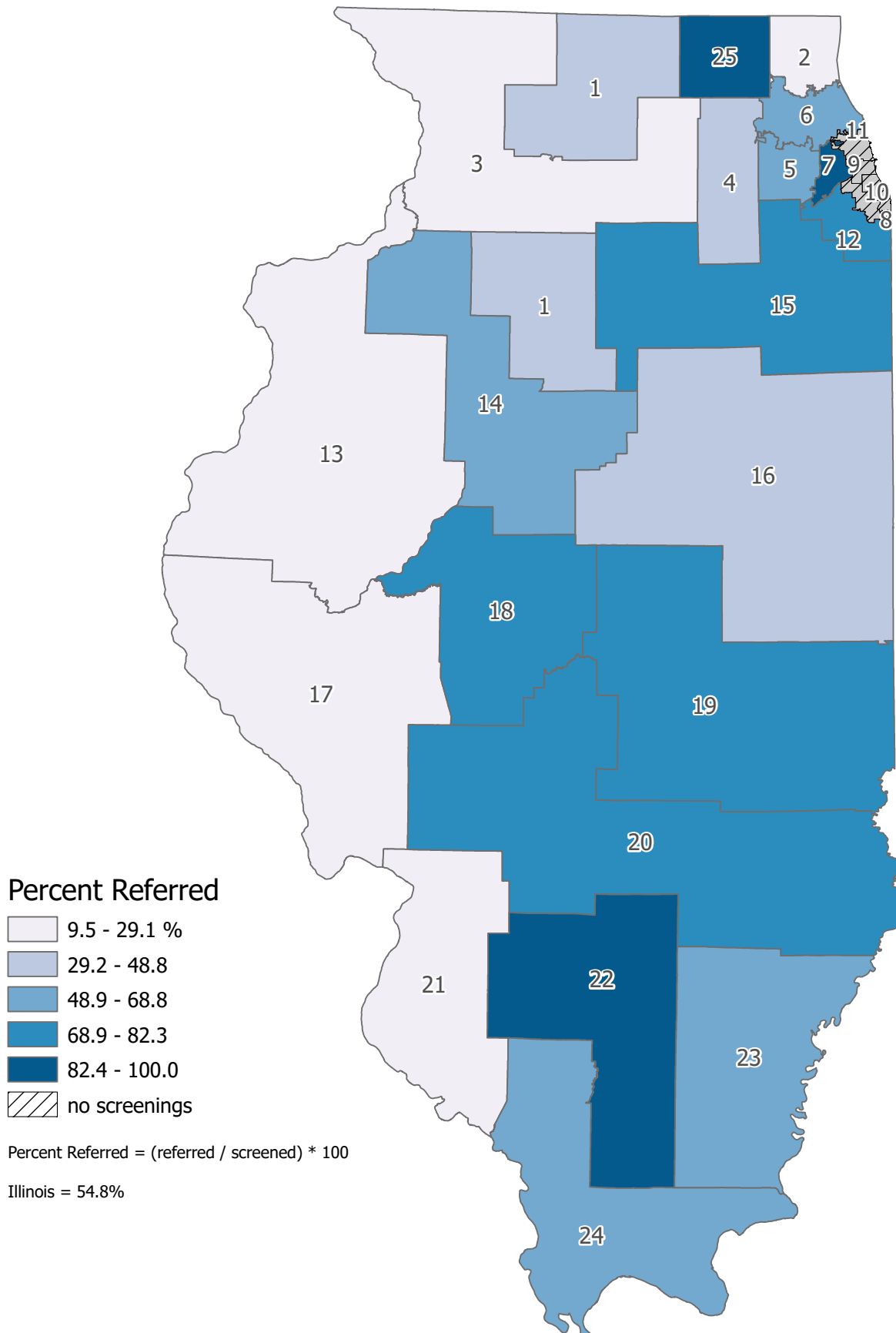
Child Find Screening FY2021, Q3

Total children birth to 5 referred, CFC region



Child Find Screening FY2021, Q3

Percent children referred, CFC region



iecam.illinois.edu
Date mapped: 6/15/2021

Screenings Reported by CFC/CPS/DCFS and ZIP / FY2021 Q3

Zip Code	Total Screened	Ages (in Months)							Not Referred	Total Referred	Screenings of Children involved with DCFS			# of Children Ages 0 to 3 Referred to										# of Children Ages 3 to 5 Referred to								Sub-Totals		
		0-11	12-23	24-35	36-47	48-60	61+	In Intact Family Services			Children of Teen Wards	In Foster Care	LEA EI	PI (ECSE)	Child Care (center-based)	Child Care Program	HV	Other Services	Multiple Services	Rescreening	LEA (ECSE)	PFA	HS	Child Care Program	HV	Other Services	Multiple Services	Rescreening	Ages 0-35 mos.	Ages 36-61+ mos.				
CFC #01 Child & Family Connections, Youth Services Network, Inc., 107 North 3rd Street, Rockford, IL 61107 - Dee Dee Lowery																																		
61008	15	0	0	0	3	12	0	0	15	0	0	0	0	0	0	0	0	0	0	0	0	1	0	0	0	0	14	0	0	0	15			
61010	4	0	0	0	4	0	0	0	4	1	0	0	0	0	0	0	0	0	0	0	2	2	0	0	0	0	0	0	0	0	4			
61012	4	0	0	2	2	0	0	0	4	0	0	0	0	2	0	0	0	0	0	0	0	2	0	0	0	0	0	0	0	2	2			
61016	1	0	0	1	0	0	0	1	0	0	0	0	0	0	0	0	0	0	0	0	0	0	0	0	0	0	0	0	0	1	0			
61024	6	0	0	0	4	2	0	0	6	0	0	0	0	0	0	0	0	0	0	0	0	6	0	0	0	0	0	0	0	0	6			
61030	31	0	0	0	22	9	0	0	31	0	0	0	0	0	0	0	0	0	0	0	0	8	0	23	0	0	0	0	0	0	31			
61061	8	0	0	0	8	0	0	7	1	0	0	0	0	0	0	0	0	0	0	0	1	0	0	0	0	0	0	0	0	8				
61063	21	0	0	7	8	6	0	17	4	0	0	0	1	0	0	0	0	0	1	0	1	0	0	0	0	1	0	0	7	14				
61064	31	0	0	3	28	0	0	27	4	0	0	0	0	0	0	0	0	0	0	0	4	0	0	0	0	0	0	0	3	28				
61068	78	0	0	8	42	28	0	73	5	0	0	0	0	0	0	0	0	0	0	0	5	0	0	0	0	0	0	0	8	70				
61072	8	0	0	0	1	4	3	3	5	0	0	0	0	0	0	0	0	0	0	0	2	5	0	0	0	0	2	0	0	8				
61073	273	0	0	14	68	120	71	196	77	0	0	4	0	1	0	0	0	0	0	0	27	34	0	0	0	0	0	15	14	259				
61079	7	0	0	3	1	2	1	6	1	0	0	0	0	0	0	0	0	0	0	0	0	0	0	0	0	1	0	0	3	4				
61080	95	0	0	5	32	36	22	79	16	0	0	0	0	0	0	0	0	0	0	0	12	0	0	0	0	0	0	4	5	90				
61084	18	0	0	1	15	2	0	15	3	0	0	0	0	0	0	0	0	0	0	0	3	0	0	0	0	0	0	0	1	17				
61088	14	0	0	0	8	6	0	9	5	0	0	0	0	0	0	0	0	0	0	0	5	0	0	0	0	0	0	0	0	14				
61101	103	2	6	15	31	29	20	90	13	0	0	0	0	0	0	0	0	0	0	10	1	0	0	0	0	0	0	2	23	80				
61102	2	0	1	0	1	0	0	2	0	0	0	0	0	0	0	0	0	0	0	0	0	0	0	0	0	0	0	0	1	1				
61103	19	3	5	11	0	0	0	15	4	0	0	0	3	0	0	0	0	0	0	0	0	0	0	0	0	0	0	0	19	0				
61104	288	0	5	4	155	123	1	7	281	5	0	7	1	0	0	0	0	0	0	0	5	279	0	0	0	0	108	103	9	279				
61107	10	1	4	5	0	0	0	10	0	0	0	0	0	0	0	0	0	0	0	0	0	0	0	0	0	0	0	0	10	0				
61108	41	6	8	10	15	1	1	38	3	0	0	0	2	0	0	0	0	0	0	0	0	0	0	0	0	0	0	0	24	17				
61109	80	1	4	11	30	25	9	78	2	0	0	0	1	0	0	0	0	0	0	0	0	0	0	0	0	0	0	0	16	64				
61111	46	0	19	20	6	1	0	28	18	1	0	3	6	0	0	0	0	0	0	0	0	0	0	0	0	0	0	3	39	7				
61112	0	0	0	0	0	0	0	0	0	0	0	0	0	0	0	0	0	0	0	0	0	0	0	0	0	0	0	0	0	0				
61114	1	0	1	0	0	0	0	1	0	0	0	0	0	0	0	0	0	0	0	0	0	0	0	0	0	0	0	0	1	0				
61115	56	3	5	4	29	11	4	0	56	0	0	1	3	0	0	9	0	0	0	0	11	33	0	0	0	0	0	0	12	44				
61235	0	0	0	0	0	0	0	0	0	0	0	0	0	0	0	0	0	0	0	0	0	0	0	0	0	0	0	0	0	0				
61238	2	2	0	0	0	0	0	0	2	0	0	0	0	0	0	0	0	2	0	0	0	0	0	0	0	0	0	0	2	0				
61254	0	0	0	0	0	0	0	0	0	0	0	0	0	0	0	0	0	0	0	0	0	0	0	0	0	0	0	0	0	0				
61273	0	0	0	0	0	0	0	0	0	0	0	0	0	0	0	0	0	0	0	0	0	0	0	0	0	0	0	0	0	0				
61310	0	0	0	0	0	0	0	0	0	0	0	0	0	0	0	0	0	0	0	0	0	0	0	0	0	0	0	0	0	0				
61314	0	0	0	0	0	0	0	0	0	0	0	0	0	0	0	0	0	0	0	0	0	0	0	0	0	0	0	0	0	0				

Screenings Reported by CFC/CPS/DCFS and ZIP / FY2021 Q3

Zip Code	Total Screened	Ages (in Months)							Not Referred	Total Referred	Screenings of Children involved with DCFS			# of Children Ages 0 to 3 Referred to										# of Children Ages 3 to 5 Referred to								Sub-Totals																																																																																																																																																																																																																																																																																																																																																																																																																																																																																																																																																																																																																																																																																																																																																																																																																																																																																																																																																																																																																																																																																																																																																																																																																																																																																																																																																																																																																								
											In Intact Family Services	Children of Teen Wards	In Foster Care	LEA EI	LEA (ECSE)	EHS	PI (center-based)	Child Care Program	HV	Other Services	Multiple Services	Rescreening	LEA (ECSE)	PFA	HS	Child Care Program	HV	Other Services	Multiple Services	Rescreening	Ages 0-35 mos.	Ages 36-61+ mos.																																																																																																																																																																																																																																																																																																																																																																																																																																																																																																																																																																																																																																																																																																																																																																																																																																																																																																																																																																																																																																																																																																																																																																																																																																																																																																																																																																																																																								
		0-11	12-23	24-35	36-47	48-60	61+																																																																																																																																																																																																																																																																																																																																																																																																																																																																																																																																																																																																																																																																																																																																																																																																																																																																																																																																																																																																																																																																																																																																																																																																																																																																																																																																																																																																																																																	

CFC #02 Child & Family Connections, Lake County Health Department, 3010 Grand Ave, 2nd Floor, Waukegan, IL 60085 - Donna Musser

60002	24	0	0	0	15	9	0	0	24	0	0	0	0	0	0	0	0	0	0	0	3	19	0	0	0	0	0	1	0	24
60015	4	0	0	0	1	3	0	2	2	0	0	0	0	0	0	0	0	0	0	2	0	0	0	0	0	0	0	0	4	
60031	5	0	0	0	3	2	0	1	4	0	0	0	0	0	0	0	0	0	0	0	4	0	0	0	0	0	0	0	5	
60047	22	0	0	2	14	6	0	9	13	0	0	0	0	2	0	0	0	0	0	0	11	0	0	0	0	0	0	2	20	
60048	2	0	0	0	1	0	1	0	2	0	0	0	0	0	0	0	0	0	0	0	0	0	0	0	1	0	0	0	2	
60085	129	39	45	45	0	0	0	115	14	1	0	0	13	0	0	0	0	1	0	0	0	0	0	0	0	0	0	129	0	
60099	11	0	0	0	5	2	0	4	7	0	0	0	0	0	0	0	0	0	0	7	0	0	0	0	0	0	0	0	7	
NONE	134	41	48	45	0	0	0	116	18	2	0	0	17	0	0	0	0	1	0	0	0	0	0	0	0	0	0	134	0	
TOTAL	331	80	93	92	39	22	1	247	84	3	0	0	30	2	0	0	0	2	0	0	23	23	0	0	0	1	0	1	265	62

CFC #03 Child & Family Connections, Regional Office of Education for Carroll, Jo Daviess, & Stephenson Co., 27 S State Ave, Ste 101, Freeport, IL 61032 - Angela Hodges

60548	10	0	0	2	5	2	1	0	10	0	0	0	0	1	0	0	0	0	0	0	0	2	6	0	0	0	0	0	0	0	2	8
-------	----	---	---	---	---	---	---	---	----	---	---	---	---	---	---	---	---	---	---	---	---	---	---	---	---	---	---	---	---	---	---	---

Screenings Reported by CFC/CPS/DCFS and ZIP / FY2021 Q3

Zip Code	Total Screened	Ages (in Months)							Not Referred	Total Referred	Screenings of Children involved with DCFS			# of Children Ages 0 to 3 Referred to										# of Children Ages 3 to 5 Referred to								Sub-Totals	
		0-11	12-23	24-35	36-47	48-60	61+	In Intact Family Services			Children of Teen Wards	In Foster Care	EI	LEA (ECSE)	EHS	PI Child Care Program	HV	Other Services	Multiple Services	Rescreening	LEA (ECSE)	PFA	HS	Child Care Program	HV	Other Services	Multiple Services	Rescreening	Ages 0-35 mos.	Ages 36-61+ mos.			
61032	433	339	72	13	8	1	0	402	31	0	0	0	3	0	0	0	0	0	0	0	0	0	28	0	0	0	0	0	0	0	0	424	9
TOTAL	443	339	72	15	13	3	1	402	41	0	0	0	3	1	0	0	0	0	0	0	0	0	29	2	6	0	0	0	0	0	0	426	17

CFC #04 Child & Family Connections, DayOne PACT, 1551 E Fabyan Pkwy, Geneva, IL 60134 - Ellana Mavromatis

60109	4	0	0	0	2	2	0	1	3	0	0	0	0	0	0	0	0	0	0	0	3	0	0	0	0	0	0	0	0	0	4
60110	106	0	4	5	58	39	0	17	89	0	0	0	0	0	0	0	0	0	0	19	58	0	0	0	12	0	0	9	97		
60119	12	0	1	2	4	5	0	0	12	0	0	0	1	1	0	0	0	0	0	4	0	0	0	0	0	0	5	3	9		
60120	46	2	4	6	17	17	0	27	19	0	0	0	0	0	0	0	0	0	0	0	14	0	0	0	5	0	0	12	34		
60123	35	4	12	8	7	4	0	35	0	0	0	0	0	0	0	0	0	0	0	0	0	0	0	0	0	0	0	24	11		
60124	5	0	0	0	2	3	0	3	2	0	0	0	0	0	0	0	0	0	0	2	0	0	0	0	0	0	0	0	5		
60134	9	0	0	0	3	6	0	5	4	0	0	0	0	0	0	0	0	0	0	4	0	0	0	0	0	0	0	0	9		
60181	127	16	31	18	27	25	10	91	36	0	0	0	22	0	0	0	0	0	0	14	0	0	0	0	0	0	0	65	62		
60505	291	86	100	105	0	0	0	251	40	0	0	0	13	0	0	0	0	20	0	0	0	0	0	0	0	0	0	291	0		
60506	1	0	0	0	0	1	0	0	0	1	0	0	0	0	0	0	0	0	0	0	0	0	0	0	0	0	0	0	1		
60510	24	0	0	3	8	9	4	8	16	0	0	1	1	1	0	0	0	0	0	9	0	0	0	0	0	0	5	3	21		
60545	24	0	0	0	16	8	0	9	15	0	0	0	0	0	0	0	0	0	0	0	10	0	0	0	0	0	5	0	24		
60560	43	0	0	0	18	24	1	4	39	0	0	3	0	0	0	0	0	0	0	0	16	0	0	0	0	0	23	0	43		
TOTAL	727	108	152	147	162	143	15	451	275	1	0	4	37	2	0	0	0	20	0	0	1	55	98	0	0	0	17	0	38	407	320

CFC #05 Child & Family Connections, DayOne PACT, 750 Warrenville Rd, Ste 300, Lisle, IL 60532 - Marianne McGuire

60101	12	0	6	5	1	0	0	3	9	0	0	0	4	0	0	0	0	0	0	4	0	0	0	0	0	0	0	1	11	1
60106	10	0	2	4	4	0	0	9	1	0	0	0	0	0	0	0	0	0	0	1	0	0	0	0	0	0	0	0	6	4
60108	15	2	3	4	6	0	0	3	12	0	0	0	0	0	0	0	3	0	5	1	3	0	0	0	0	0	0	9	6	
60137	73	11	12	37	12	1	0	3	70	1	0	0	3	4	0	0	0	14	1	38	5	2	2	0	0	0	0	1	60	13
60139	47	12	9	25	1	0	0	0	47	1	0	0	6	0	0	0	0	1	1	38	0	1	0	0	0	0	0	0	46	1
60148	109	6	11	44	33	15	0	10	99	2	0	0	6	8	0	0	0	16	0	31	14	21	3	0	0	0	0	0	61	48
60181	248	34	68	72	45	21	8	113	135	0	0	0	88	21	7	0	0	0	0	0	19	0	0	0	0	0	0	0	174	74
60185	14	2	4	8	0	0	0	6	8	0	0	0	4	3	1	0	0	0	0	0	0	0	0	0	0	0	0	14	0	
60187	194	20	21	52	60	38	3	147	47	0	0	0	9	2	0	0	0	0	0	5	21	0	0	0	0	0	0	10	93	101
60188	15	0	1	8	3	3	0	3	12	0	0	0	2	0	0	0	0	4	0	2	2	0	0	0	0	0	2	9	6	
60189	1	0	0	0	1	0	0	0	1	0	0	0	0	0	0	0	0	0	0	0	0	1	0	0	0	0	0	0	0	1
60191	7	0	0	0	2	4	1	0	7	0	0	0	0	0	0	0	0	0	0	0	0	7	0	0	0	0	0	0	0	7

Screenings Reported by CFC/CPS/DCFS and ZIP / FY2021 Q3

Zip Code	Total Screened	Ages (in Months)						Not Referred	Total Referred	Screenings of Children involved with DCFS			# of Children Ages 0 to 3 Referred to										# of Children Ages 3 to 5 Referred to								Sub-Totals		
										In Intact Family Services	Children of Teen Wards	In Foster Care	PI	Child Care	HV	Other Services	Multiple Services	Rescreening	LEA	PFA	HS	Child Care Program	HV	Other Services	Multiple Services	Rescreening	Ages 0-35 mos.	Ages 36-61+ mos.					
		0-11	12-23	24-35	36-47	48-60	61+			ECSE	(center-based)	Program	ECSE	ECSE	ECSE	ECSE	ECSE	ECSE	ECSE	ECSE	ECSE	ECSE	ECSE	ECSE	ECSE	ECSE	ECSE	ECSE	ECSE	ECSE	ECSE	ECSE	ECSE
		0-11	12-23	24-35	36-47	48-60	61+			ECSE	(center-based)	Program	ECSE	ECSE	ECSE	ECSE	ECSE	ECSE	ECSE	ECSE	ECSE	ECSE	ECSE	ECSE	ECSE	ECSE	ECSE	ECSE	ECSE	ECSE	ECSE	ECSE	ECSE
60439	3	0	0	0	2	0	1	2	1	0	0	0	0	0	0	0	0	0	0	0	0	0	1	0	0	0	0	0	0	0	0	3	
60504	56	2	10	5	21	14	4	50	6	0	0	0	1	0	0	0	0	0	0	0	0	1	0	0	0	0	0	0	0	2	17	39	
60516	2	0	0	0	2	0	0	2	0	0	0	0	0	0	0	0	0	0	0	0	0	0	0	0	0	0	0	0	0	0	0	2	
60527	8	0	0	0	5	2	0	0	8	0	0	0	0	0	0	0	0	0	0	0	0	5	0	3	0	0	0	0	0	0	0	7	
60540	191	12	9	40	70	49	9	15	176	0	0	0	13	20	0	1	0	20	1	0	2	62	59	0	0	0	0	0	0	0	61	128	
TOTAL	1005	101	156	304	268	147	26	366	639	4	0	0	136	58	8	1	0	20	39	2	128	130	95	8	0	0	0	2	14	561	441		

CFC #06 Child & Family Connections, Clearbrook, 1835 W Central Rd, Arlington Heights, IL 60005 - Jason Tietz

60004	21	0	0	12	2	6	1	9	12	0	0	0	3	0	0	0	0	0	0	0	9	0	0	0	0	0	0	0	12	9
60016	44	0	0	3	18	21	2	7	37	0	0	0	0	0	0	0	3	0	0	5	29	0	0	0	0	0	0	3	41	
60022	18	0	0	0	9	9	0	12	6	0	0	0	0	0	0	0	0	0	0	1	0	0	0	0	0	0	5	0	18	
60056	49	0	0	2	16	30	1	1	48	0	0	0	2	0	0	0	0	0	0	16	22	0	0	0	5	0	3	2	47	
60062	48	0	0	1	36	9	2	36	12	0	0	0	1	0	0	0	0	0	0	9	0	0	0	0	2	0	0	1	47	
60070	11	0	0	0	6	5	0	1	10	0	0	0	0	0	0	0	0	0	0	1	9	0	0	0	0	0	0	0	11	
60091	1	0	0	0	1	0	0	0	1	0	0	0	0	0	0	0	0	0	0	1	0	0	0	0	0	0	0	0	1	
60194	142	16	13	13	59	35	6	72	70	0	0	0	4	0	0	0	0	0	0	0	46	0	2	3	14	0	1	42	100	
60714	43	0	0	28	5	6	4	9	34	0	0	0	0	14	0	0	0	0	0	3	0	0	0	0	0	0	6	28	15	
TOTAL	377	16	13	59	152	121	16	147	230	0	0	0	10	14	0	0	0	3	0	11	45	106	0	2	3	21	0	15	88	289

CFC #07 Child & Family Connections, Suburban Access, Inc, One Westbrook Corporate Ctr, Ste 640, Westchester, IL 60154 - Jo Ann Alferink

60804	17	0	0	0	2	9	6	0	17	0	0	0	0	0	0	0	0	0	0	0	4	13	0	0	0	0	0	0	0	17
TOTAL	17	0	0	0	2	9	6	0	17	0	0	0	0	0	0	0	0	0	0	0	4	13	0	0	0	0	0	0	0	17

CFC #12 Child & Family Connections, Easter Seals of Metropolitan Chicago, 17300 S Ozark Ave - North Bldg, Tinley Park, IL 60477 - Peter Byrne

60429	8	1	7	0	0	0	0	7	1	0	0	0	1	0	0	0	0	0	0	0	0	0	0	0	0	0	0	0	0	8	0
60439	7	0	0	2	2	2	1	2	5	0	0	0	0	0	0	0	0	0	0	0	1	4	0	0	0	0	0	0	2	5	
60452	7	0	0	0	5	2	0	1	6	0	0	0	0	0	0	0	0	0	0	0	6	0	0	0	0	0	0	0	0	7	
60453	11	0	0	0	7	4	0	0	11	0	0	0	0	0	0	0	0	0	0	0	7	0	0	0	4	0	0	0	11		
60463	15	0	0	0	7	7	1	15	0	0	0	0	0	0	0	0	0	0	0	0	0	0	0	0	0	0	0	0	15		
60471	105	0	0	0	58	42	5	0	105	0	0	0	0	0	0	0	0	0	0	6	99	0	0	0	0	0	0	0	105		

Screenings Reported by CFC/CPS/DCFS and ZIP / FY2021 Q3

Zip Code	Total Screened	Ages (in Months)								Not Referred	Total Referred	Screenings of Children involved with DCFS			# of Children Ages 0 to 3 Referred to								# of Children Ages 3 to 5 Referred to								Sub-Totals	
		0-11	12-23	24-35	36-47	48-60	61+	In Intact Family Services	Children of Teen Wards			In Foster Care	EI	LEA (ECSE)	EHS	PI Child Care Program	HV	Other Services	Multiple Services	Rescreening	LEA (ECSE)	PFA	HS	Child Care Program	HV	Other Services	Multiple Services	Rescreening	Ages 0-35 mos.	36-61+ mos.		
60477	5	0	0	3	0	2	0	0	2	0	0	0	0	2	0	0	0	0	0	0	0	0	0	0	0	0	0	0	3	2		
TOTAL	158	1	7	5	79	59	7	25	130	0	0	0	1	2	0	0	0	0	0	0	0	7	116	0	0	0	4	0	13	145		

CFC #13 Child & Family Connections, Regional Office of Education #26, 130 S Lafayette St, Ste 200, Macomb, IL 61455 - Chuck Farr

61201	415	223	157	16	0	0	0	386	29	0	0	0	29	0	0	0	0	0	0	0	0	0	0	0	0	0	0	0	396	0
61422	23	4	1	5	12	1	0	8	15	3	0	1	0	0	0	0	0	0	0	0	0	15	0	0	0	0	0	0	10	13
61441	1	0	1	0	0	0	0	1	0	0	0	0	0	0	0	0	0	0	0	0	0	0	0	0	0	0	0	1	0	
61455	9	3	2	4	0	0	0	7	2	2	0	2	0	2	0	0	0	0	0	0	0	0	0	0	0	0	0	9	0	
61484	1	0	0	0	1	0	0	0	1	0	0	0	0	0	0	0	0	0	0	0	1	0	0	0	0	0	0	0	1	
61501	3	1	0	2	0	0	0	2	1	1	0	2	0	0	0	0	1	0	0	0	0	0	0	0	0	0	0	3	0	
61520	4	0	1	2	1	0	0	0	4	0	0	0	1	0	0	0	0	0	0	0	0	2	0	1	0	0	0	3	1	
61542	1	0	1	0	0	0	0	0	1	0	0	1	0	0	0	0	1	0	0	0	0	0	0	0	0	0	0	1	0	
61544	1	0	0	1	0	0	0	0	1	0	0	0	0	0	0	1	0	0	0	0	0	0	0	0	0	0	0	1	0	
62321	2	0	1	1	0	0	0	2	0	0	0	0	0	0	0	0	0	0	0	0	0	0	0	0	0	0	0	2	0	
62326	1	1	0	0	0	0	0	1	0	0	0	0	0	0	0	0	0	0	0	0	0	0	0	0	0	0	0	1	0	
62341	4	0	1	3	0	0	0	3	1	0	0	1	0	0	0	0	0	0	0	0	0	0	0	0	0	0	0	4	0	
62358	2	2	0	0	0	0	0	2	0	0	0	0	0	0	0	0	0	0	0	0	0	0	0	0	0	0	0	2	0	
62379	6	1	1	4	0	0	0	4	2	0	2	1	0	0	0	0	2	0	0	0	0	0	0	0	0	0	0	6	0	
62681	14	0	0	1	9	4	0	0	14	1	0	0	0	0	0	0	0	0	0	0	0	14	0	0	0	0	0	1	13	
TOTAL	487	235	166	39	23	5	0	416	71	7	2	8	30	2	0	0	1	4	0	0	0	32	0	1	0	0	0	0	440	28

CFC #14 Child & Family Connections, 3000 W Rohmann Ave, , West Peoria, IL 61604 - Michelle Harr

61443	2	0	0	0	0	1	1	1	1	0	0	0	0	0	0	0	0	0	0	0	0	0	0	0	0	0	0	1	0	2	
61548	45	0	0	0	24	19	2	5	40	0	0	0	0	0	0	0	0	0	0	0	5	33	0	0	0	2	0	0	0	45	
61554	19	3	6	8	2	0	0	19	0	3	0	0	0	0	0	0	0	0	0	0	0	0	0	0	0	0	0	17	2		
61564	0	0	0	0	0	0	0	0	0	0	0	0	0	0	0	0	0	0	0	0	0	0	0	0	0	0	0	0	0		
61605	87	0	0	6	53	22	6	2	85	3	0	11	0	0	0	3	0	0	1	0	2	11	64	0	0	0	1	0	3	6	81
61614	79	0	0	10	51	18	0	0	79	76	0	3	0	1	0	0	0	0	3	0	0	9	66	0	0	0	0	4	0	10	69
61616	26	6	4	14	0	2	0	25	1	0	0	0	0	0	0	0	0	0	0	0	0	0	0	0	0	0	0	1	24	2	

Screenings Reported by CFC/CPS/DCFS and ZIP / FY2021 Q3

Zip Code	Total Screened	Ages (in Months)						Not Referred	Total Referred	Screenings of Children involved with DCFS			# of Children Ages 0 to 3 Referred to										# of Children Ages 3 to 5 Referred to							Sub-Totals	
		0-11	12-23	24-35	36-47	48-60	61+			In Intact Family Services	Children of Teen Wards	In Foster Care	EI	LEA (ECSE)	EHS	PI (center-based)	Child Care Program	HV	Other Services	Multiple Services	Rescreening	LEA (ECSE)	PFA	HS	Child Care Program	HV	Other Services	Multiple Services	Rescreening	Ages 0-35 mos.	Ages 36-61+ mos.
61738	15	0	0	0	10	5	0	15	0	0	0	0	0	0	0	0	0	0	0	0	0	0	0	0	0	0	0	0	0	0	15
TOTAL	273	9	10	38	140	67	9	67	206	82	0	14	0	1	0	3	0	0	4	0	2	25	163	0	0	0	3	4	5	57	216

CFC #15 Child & Family Connections, Services of Will, Grundy, & Kankakee Counties, Inc., 2300 Glenwood Ave, Joliet, IL 60435 - Rachel Cimino

60416	12	0	0	0	4	8	0	0	12	0	0	0	0	0	0	0	0	0	0	0	0	12	0	0	0	0	0	0	0	12	
60435	3	2	1	0	0	0	0	0	3	0	0	1	1	0	0	0	0	2	0	0	0	0	0	0	0	0	0	0	0	3	0
60450	8	0	0	0	4	4	0	0	8	0	0	0	0	0	0	0	0	0	0	0	0	2	6	0	0	0	0	0	0	0	8
60451	6	0	0	0	3	2	1	0	6	0	0	0	0	0	0	0	0	0	0	0	0	4	0	0	2	0	0	0	0	0	6
60544	25	0	0	3	12	6	4	0	25	0	0	0	0	0	0	0	0	0	0	0	0	12	13	0	0	0	0	0	0	3	22
60901	15	0	0	0	7	8	0	0	15	0	0	0	0	0	0	0	0	0	0	0	0	0	5	10	0	0	0	0	0	0	15
60954	5	0	0	1	4	0	0	0	5	0	0	0	0	0	0	0	0	0	0	0	1	0	4	0	0	0	0	0	0	1	4
61301	15	0	0	0	2	10	3	15	0	0	0	0	0	0	0	0	0	0	0	0	0	0	0	0	0	0	0	0	0	0	15
61342	18	0	0	1	12	5	0	1	17	0	0	0	0	0	0	0	0	0	0	0	0	2	11	0	0	0	3	0	1	1	17
61350	108	0	0	6	34	55	13	74	34	0	0	0	0	0	0	0	0	0	0	0	0	4	23	0	0	0	6	0	1	6	102
61354	24	0	0	0	9	14	1	7	17	0	0	0	0	0	0	0	0	0	0	0	0	3	6	0	0	0	5	0	3	0	24
61360	39	0	0	2	18	12	7	14	25	0	0	0	0	0	0	0	2	0	0	0	0	2	19	0	0	0	0	0	2	2	37
61364	61	0	0	0	27	27	7	33	28	0	0	0	0	0	0	0	0	0	0	0	0	2	18	0	0	0	5	0	3	0	61
TOTAL	339	2	1	13	136	151	36	144	195	0	0	1	1	0	0	0	2	2	0	0	1	31	117	10	2	0	19	0	10	16	323

CFC #16 Child & Family Connections, 201 W Springfield Ave, Ste 508 & 509, , Champaign, IL 61820 - Chris Johnson

60420	24	0	0	9	12	3	0	10	14	0	0	0	0	0	0	0	0	4	0	0	0	8	0	0	0	5	4	1	9	15
60970	187	61	58	40	7	21	0	185	2	0	0	0	1	1	0	0	0	0	0	0	0	0	0	0	0	0	0	0	159	28
61364	15	0	0	4	7	4	0	1	14	0	0	0	0	0	0	0	0	4	0	0	0	10	0	0	0	0	3	3	4	11
61704	42	0	0	0	26	11	5	0	42	0	0	0	0	0	0	0	0	0	0	0	5	20	0	15	0	0	0	2	0	42
61739	38	0	0	7	20	11	0	7	31	0	0	1	0	0	0	0	0	6	1	2	0	20	0	0	0	7	7	4	7	31
61764	42	22	5	2	9	4	0	27	15	0	0	0	0	0	0	0	0	1	0	1	0	13	0	0	0	0	0	0	29	13
TOTAL	348	83	63	62	81	54	5	230	118	0	0	1	1	1	0	0	0	15	1	3	5	71	0	15	0	12	14	10	208	140

CFC #17 Child & Family Connections, ROE of Adams/Pike Counties, 510 Maine St, Ste 615, Quincy, IL 62301 - Kara Hoffman

62044	14	0	0	4	5	5	0	8	6	0	0	0	0	1	0	0	0	0	0	0	1	2	0	0	0	0	0	0	2	4	10
62047	2	0	0	0	2	0	0	0	2	0	0	0	0	0	0	0	0	0	0	0	2	0	0	0	0	0	0	0	0	2	
62092	28	0	0	10	13	4	1	20	8	0	0	0	0	0	0	0	0	0	0	3	0	0	0	0	0	0	0	5	10	18	

Screenings Reported by CFC/CPS/DCFS and ZIP / FY2021 Q3

Zip Code	Total Screened	Ages (in Months)						Not Referred	Total Referred	Screenings of Children involved with DCFS			# of Children Ages 0 to 3 Referred to										# of Children Ages 3 to 5 Referred to								Sub-Totals																																																																																																																																																																																																																																																																																																																																																																																																																																																																																																																																																																																																																																																																																																																																																																																																																																																																																																																																																																																																																																																																																																																																																																																																																																																																																																																																																																																																																																				
										In Intact Family Services	Children of Teen Wards	In Foster Care	PI (center-based)	Child Care Program	HV	Other Services	Multiple Services	Rescreening	LEA (ECSE)	PFA	HS	Child Care Program	HV	Other Services	Multiple Services	Rescreening	Ages 0-35 mos.	Ages 36-61+ mos.																																																																																																																																																																																																																																																																																																																																																																																																																																																																																																																																																																																																																																																																																																																																																																																																																																																																																																																																																																																																																																																																																																																																																																																																																																																																																																																																																																																																																																							
		0-11	12-23	24-35	36-47	48-60	61+			EI	LEA (ECSE)	EHS																																																																																																																																																																																																																																																																																																																																																																																																																																																																																																																																																																																																																																																																																																																																																																																																																																																																																																																																																																																																																																																																																																																																																																																																																																																																																																																																																																																																																																																							

CFC #18 Child & Family Connections, Sangamon Co. Public Health Department, 2833 S Grand Ave, E, Springfield, IL 62703 - Lisa McGlothlin

62644	6	0	3	3	0	0	0	0	6	0	0	0	0	0	0	0	0	6	0	0	0	0	0	0	0	0	0	0	0	6	0
62704	63	0	0	1	45	14	3	0	63	0	0	0	0	0	0	0	0	0	0	0	0	6	56	0	1	0	0	0	0	1	62
TOTAL	69	0	3	4	45	14	3	0	69	0	0	0	0	0	0	0	0	6	0	0	0	6	56	0	1	0	0	0	0	7	62

CFC #19 Child & Family Connections, Macon Co. Community Mental Health Board, 132 S Water St, Ste 604, Decatur, IL 62523 - Amy Farmer

61818	17	0	0	5	8	4	0	0	17	1	0	0	0	0	0	0	0	0	0	0	0	17	0	0	0	0	0	0	5	12	
61856	49	0	0	11	30	8	0	49	0	0	0	0	0	0	0	0	0	0	0	0	0	0	0	0	0	0	0	11	38		
61910	61	0	0	17	14	1	29	3	58	0	0	0	0	1	0	0	0	0	12	3	0	3	34	0	0	0	3	3	0	17	44
61911	2	0	0	2	0	0	0	0	2	0	0	0	0	2	0	0	0	0	0	0	0	0	0	0	0	0	0	0	2	0	
61912	14	0	0	0	3	6	5	1	13	0	0	0	0	0	0	0	0	0	0	0	0	13	0	0	0	0	0	0	0	14	
61913	24	0	0	5	9	5	5	5	19	0	0	0	0	2	0	0	0	0	3	0	0	1	13	0	0	0	1	1	0	5	19
61914	28	0	0	3	9	2	14	0	28	0	0	0	0	1	0	0	0	0	2	0	0	1	24	0	0	0	0	0	0	3	25
61920	103	0	0	23	33	24	23	5	98	0	0	0	2	4	0	0	0	0	17	3	0	1	74	0	0	0	6	6	0	23	80
61924	15	0	1	1	13	0	0	2	13	0	0	0	0	0	0	0	0	1	0	0	2	10	0	0	0	0	0	0	2	13	
61933	10	0	0	1	2	0	7	1	9	0	0	0	0	1	0	0	0	0	0	0	1	7	0	0	0	0	0	0	1	9	
61937	12	0	0	2	8	1	1	0	12	0	0	0	0	0	0	0	0	2	0	0	0	10	0	0	0	1	1	0	2	10	
61938	63	0	0	14	33	9	7	2	61	0	0	0	0	1	0	0	0	0	11	1	1	3	44	0	0	0	4	3	0	14	49
61943	32	0	0	2	4	7	16	16	16	0	0	0	0	0	0	0	0	5	1	0	2	9	0	0	0	0	0	0	2	27	
61944	85	0	0	27	29	8	20	21	65	0	0	0	3	4	0	0	0	0	20	3	0	3	34	0	0	0	0	0	0	27	57
61951	13	0	0	4	0	0	0	6	7	0	0	0	0	3	0	0	0	0	1	0	0	0	3	0	0	0	0	0	0	4	0
61953	98	0	0	12	26	14	46	11	87	0	0	0	2	1	0	0	0	0	9	1	0	6	68	0	0	0	8	8	0	12	86

Screenings Reported by CFC/CPS/DCFS and ZIP / FY2021 Q3

Zip Code	Total Screened	Screenings of Children involved with DCFS																												# of Children Ages 0 to 3 Referred to								# of Children Ages 3 to 5 Referred to								Sub-Totals	
		Ages (in Months)						Not Referred	Total Referred	In Intact Family Services	Children of Teen Wards	In Foster Care	EI	LEA (ECSE)	EHS	PI (center-based)	Child Care Program	HV	Other Services	Multiple Services	Rescreening	LEA (ECSE)	PFA	HS	Child Care Program	HV	Other Services	Multiple Services	Rescreening	Ages 0-35 mos.	Ages 36-61+ mos.																
		0-11	12-23	24-35	36-47	48-60	61+																																								
61956	34	0	0	8	11	10	5	1	33	0	0	0	0	3	0	0	0	0	5	1	0	5	19	0	0	0	2	2	0	8	26																
61957	21	0	0	8	11	1	1	0	21	0	0	0	0	0	0	0	0	8	0	0	1	12	0	0	0	0	0	0	8	13																	
62420	56	0	0	21	22	12	1	1	55	0	0	0	0	5	0	0	0	14	1	1	1	34	0	0	0	3	3	0	21	35																	
62441	65	0	0	14	34	13	4	1	64	0	0	0	2	2	0	0	0	10	1	0	10	40	0	0	0	2	2	0	14	51																	
62442	84	0	0	15	24	23	23	19	65	0	0	0	2	1	0	0	0	12	1	0	5	45	0	0	0	0	0	0	15	70																	
62447	46	0	0	5	16	5	20	0	46	0	0	0	0	4	0	0	0	1	0	0	3	38	0	0	0	1	1	0	5	41																	
62463	31	0	0	6	15	6	4	1	30	0	0	0	1	2	0	0	0	3	1	0	1	23	0	0	0	1	1	0	6	25																	
62468	36	0	0	7	13	15	1	0	36	0	0	0	0	0	0	0	0	7	0	0	2	27	0	0	0	0	0	0	7	29																	
62513	50	0	0	20	29	1	0	17	33	1	0	0	0	1	0	0	0	0	0	0	1	33	0	0	0	10	2	0	20	30																	
62549	66	0	0	16	29	21	0	35	31	0	0	1	0	7	0	0	0	0	0	0	0	24	0	0	0	0	0	0	16	50																	
62554	46	0	0	14	29	3	0	0	46	4	0	4	0	14	0	0	0	0	0	0	1	32	0	0	0	0	0	1	14	32																	
62565	96	1	8	20	25	12	30	21	75	0	0	0	1	4	0	0	0	13	3	0	0	57	0	0	0	2	2	0	29	67																	
TOTAL	1257	1	9	283	479	211	262	218	1040	6	0	5	13	63	0	0	0	156	20	2	53	744	0	0	0	44	35	1	293	952																	

CFC #20 Child & Family Connections, Community Support Systems, 1901 S 4th St, Ste 209, Effingham, IL 62401 - Rita Wahl

62401	19	0	0	4	7	4	4	4	19	0	0	0	0	1	0	0	0	0	3	0	4	2	9	0	0	0	1	1	0	4	15
62411	70	0	0	7	19	12	32	2	68	0	0	0	0	0	0	0	0	7	0	0	8	36	17	0	0	0	0	0	7	63	
62414	22	0	0	6	11	4	1	2	20	0	0	0	0	0	0	0	0	6	0	0	0	20	0	0	0	0	0	0	6	16	
62424	59	0	0	7	23	4	25	24	35	0	0	0	0	0	0	0	0	7	0	0	2	26	0	0	0	0	0	0	7	52	
62467	116	0	0	20	61	25	12	24	92	0	0	0	0	0	0	0	0	17	0	0	2	71	0	0	0	2	2	0	20	98	
62674	2	0	0	0	0	2	0	1	1	0	0	0	0	0	0	0	0	0	0	0	0	0	0	0	0	0	0	1	0	2	
TOTAL	288	0	0	44	121	51	74	57	235	0	0	0	0	1	0	0	0	40	0	4	14	162	17	0	0	3	3	1	44	246	

CFC #21 Child & Family Connections, Regional Office of Education #13, 4 Eagle Center, Ste 4, O'Fallon, IL 62269 - Terri Kampwerth

62010	8	0	0	3	3	1	1	0	8	0	0	0	0	3	0	0	0	0	0	2	0	2	5	0	0	0	0	2	1	3	5
62025	35	0	0	0	25	10	0	3	31	0	0	1	0	0	0	0	0	0	0	0	0	31	0	0	0	3	2	1	0	35	
62040	397	156	113	50	48	26	0	393	4	0	0	0	4	0	0	0	0	0	0	0	0	0	0	0	0	0	0	0	319	74	
62206	2	0	0	0	0	0	2	0	1	0	0	0	0	0	0	0	0	0	0	0	1	1	1	0	0	0	0	0	0	2	
62223	41	6	7	11	11	6	0	29	12	1	0	4	3	0	0	0	0	0	0	0	3	6	0	0	0	1	2	1	24	17	
62234	33	0	0	1	16	12	4	3	30	0	0	1	0	0	0	0	0	0	0	0	4	23	0	0	0	1	0	0	1	32	
62269	19	0	5	8	2	4	0	15	4	0	0	1	2	0	0	0	0	0	0	0	0	1	0	0	0	1	1	0	13	6	
62278	22	0	0	1	15	5	0	22	0	0	0	0	0	0	0	0	0	0	0	0	0	9	9	0	0	0	0	4	1	20	

Screenings Reported by CFC/CPS/DCFS and ZIP / FY2021 Q3

Zip Code	Total Screened	Ages (in Months)							Not Referred	Total Referred	Screenings of Children involved with DCFS			# of Children Ages 0 to 3 Referred to										# of Children Ages 3 to 5 Referred to								Sub-Totals	
		0-11	12-23	24-35	36-47	48-60	61+	In Intact Family Services			Children of Teen Wards	In Foster Care	LEA EI	PI (ECSE)	Child Care (center-based)	Program	HV	Other Services	Multiple Services	Rescreening	LEA (ECSE)	PFA	HS	Child Care Program	HV	Other Services	Multiple Services	Rescreening	Ages 0-35 mos.	Ages 36-61+ mos.			
62282	3	0	0	0	2	1	0	3	0	0	0	0	0	0	0	0	0	0	0	0	0	0	0	0	0	0	0	0	0	3			
62286	10	0	0	0	6	2	2	0	10	0	0	0	0	0	0	0	0	0	1	9	0	0	0	0	0	0	0	0	0	10			
62294	15	7	3	4	1	0	0	11	4	0	0	0	0	0	0	0	0	0	0	0	0	0	0	0	0	0	0	0	14	1			
TOTAL	585	169	128	78	129	67	9	479	104	1	0	7	9	3	0	0	0	0	0	85	10	0	0	6	7	7	375	205					

CFC #23 Child & Family Connections, Wabash & Ohio Valley Special Education Dist., 800 S Division St, Norris City, IL 62869 - Charity Heifner

62410	1	0	0	0	0	0	1	0	1	0	0	0	0	0	0	0	0	0	0	0	0	1	0	0	0	0	0	0	0	1
62476	7	0	0	2	3	2	0	0	7	0	0	0	0	0	0	0	0	0	0	0	0	7	0	0	0	0	0	5	2	5
62806	2	0	0	0	2	0	0	0	2	0	0	0	0	0	0	0	0	0	0	0	0	2	0	0	0	0	0	1	0	2
62821	6	0	0	0	3	3	0	0	6	0	0	0	0	0	0	0	0	0	0	0	1	5	0	0	0	0	0	3	0	6
62835	7	0	0	2	3	2	0	4	3	0	0	0	0	0	0	0	0	0	0	0	0	3	0	0	0	0	0	0	2	5
62837	58	11	8	10	22	23	0	36	22	0	0	0	0	0	0	0	0	0	2	0	22	0	0	0	0	0	11	29	45	
62850	58	0	0	0	32	26	0	0	58	0	0	0	0	0	0	0	0	0	0	3	26	0	0	0	0	0	11	0	58	
62854	12	0	0	0	11	1	0	0	12	0	0	0	0	0	0	0	0	0	0	1	11	0	0	0	0	0	1	0	12	
62859	6	0	0	4	0	2	0	6	0	0	0	0	0	0	0	0	0	0	0	0	0	0	0	0	0	0	0	4	2	
62863	12	1	3	4	1	3	0	12	0	0	0	0	0	0	0	0	0	0	0	0	0	0	0	0	0	0	0	8	4	
62895	14	0	0	0	8	5	1	0	14	0	0	0	0	0	0	0	0	0	0	0	14	0	0	0	0	0	4	0	14	
62917	11	0	0	0	9	2	0	0	11	0	0	0	0	0	0	0	0	0	0	0	11	0	0	0	0	0	5	0	11	
62930	7	0	0	1	5	1	0	0	7	0	0	0	0	0	0	0	0	0	0	0	7	0	0	0	0	0	4	1	6	
62935	1	0	0	0	0	0	0	0	1	0	0	0	0	0	0	0	0	0	0	0	1	0	0	0	0	0	1	0	0	
62946	89	1	13	7	40	28	0	37	52	0	0	0	0	0	0	0	0	0	0	10	42	0	0	0	0	0	18	21	68	
62984	14	7	3	4	0	0	0	14	0	0	0	0	0	0	0	0	0	0	0	0	0	0	0	0	0	0	0	14	0	
TOTAL	305	20	27	34	139	98	2	109	196	0	0	0	0	0	0	0	0	0	2	15	152	0	0	0	0	0	64	81	239	

CFC #24 Child & Family Connections, Archway, Inc., 2751 W Main, PO Box 1180, Carbondale, IL 62901-1180 - Lindsay Baskin

62237	8	0	0	1	6	1	0	0	8	0	0	0	1	0	0	0	0	0	0	0	0	7	0	0	0	0	0	0	1	7
62274	1	0	0	0	1	0	0	0	1	0	0	0	0	0	0	0	0	0	0	0	0	1	0	0	0	0	0	0	0	1
62832	24	4	6	10	4	0	0	0	24	0	0	0	0	0	17	0	3	0	0	0	0	0	0	0	0	0	0	0	20	4
62901	33	10	4	13	1	5	0	15	2	0	0	0	0	1	0	0	0	0	0	0	0	1	0	0	0	0	0	0	27	6
62903	26	3	5	4	5	9	0	0	26	0	0	0	0	0	0	0	12	0	12	12	0	14	0	0	0	0	2	1	12	14
62916	1	0	0	0	0	1	0	0	1	0	0	0	0	0	0	0	0	0	0	0	0	1	0	0	0	0	0	0	0	1
62924	3	0	0	0	1	2	0	0	3	0	0	0	0	0	0	0	0	0	0	0	0	3	0	0	0	0	0	0	0	3

Screenings Reported by CFC/CPS/DCFS and ZIP / FY2021 Q3

Zip Code	Total Screened	Ages (in Months)								Not Referred	Total Referred	Screenings of Children involved with DCFS			# of Children Ages 0 to 3 Referred to										# of Children Ages 3 to 5 Referred to								Sub-Totals	
		0-11	12-23	24-35	36-47	48-60	61+	In Intact Family Services	Children of Teen Wards			In Foster Care	EI	LEA (ECSE)	PI (center-based)	Child Care Program	HV	Other Services	Multiple Services	Rescreening	LEA (ECSE)	PFA	HS	Child Care Program	HV	Other Services	Multiple Services	Rescreening	Ages 0-35 mos.	Ages 36-61+ mos.				
62932	1	0	0	0	1	0	0	0	1	0	0	0	0	0	0	0	0	0	0	0	1	0	0	0	0	0	0	0	0	1				
62994	1	0	0	0	0	1	0	0	1	0	0	0	0	0	0	0	0	0	0	0	0	0	0	0	0	0	0	0	0	1				
TOTAL	98	17	15	28	19	19	0	15	67	0	0	0	1	1	0	17	0	15	0	12	12	0	28	0	0	0	0	2	1	60	38			

CFC #25 Child & Family Connections, Options & Advocacy for McHenry Co., 365 Millennium Dr, Ste A, Crystal Lake, IL 60012 - Susan Beckman

60013	6	0	0	0	4	2	0	5	1	0	0	0	0	0	0	0	0	0	0	0	1	0	0	0	0	0	0	0	0	6	
60014	137	23	44	53	11	4	2	12	125	0	0	0	115	0	0	0	0	0	3	0	3	0	0	0	2	0	2	120	17		
60050	8	0	0	0	5	3	0	0	8	0	0	0	0	0	0	0	0	0	0	4	3	0	0	0	0	0	1	0	8		
60072	8	0	0	0	2	6	0	4	4	0	0	0	0	0	0	0	0	0	0	0	4	0	0	0	0	0	0	0	8		
60097	0	0	0	0	0	0	0	0	0	0	0	0	0	0	0	0	0	0	0	0	0	0	0	0	0	0	0	0	0		
60098	53	0	0	1	31	17	0	7	46	0	0	0	0	0	0	0	0	0	1	0	0	45	0	0	0	2	3	0	1	48	
60142	17	0	0	4	12	1	0	3	14	0	0	0	0	0	0	0	0	0	0	9	5	0	0	0	0	0	0	4	13		
60152	18	0	0	3	11	4	0	5	13	0	0	0	0	0	0	0	0	0	0	2	9	0	0	0	0	0	0	3	15		
TOTAL	247	23	44	61	76	37	2	36	211	0	0	0	115	0	0	0	0	0	3	1	0	19	66	0	0	0	4	3	3	128	115

Screenings Reported by CFC/CPS/DCFS and Month / FY2021 Q3

Month	Total Screened	Screenings of Children involved with DCFS										# of Children Ages 0 to 3 Referred to								# of Children Ages 3 to 5 Referred to								Sub-Totals							
		Ages (in Months)							Not Referred	Total Referred	In Intact Family Services			Children of Teen Wards	In Foster Care	PI Child Care Program				Other HV	Other Multiple Services				LEA (ECSE)	PFA	HS	Child Care Program	Other HV	Multiple Services	Rescreening	Ages 0-35 mos.	Ages 36-61+ mos.		
		0-11	12-23	24-35	36-47	48-60	61+	LEA EI			(ECSE)	EHS	(center-based)			Other	Multiple	Rescreening	LEA (ECSE)		PFA	HS	Child Care Program	Other HV										Multiple Services	Rescreening
CFC #01 Child & Family Connections, Youth Services Network, Inc., 107 North 3rd Street, Rockford, IL 61107 - Dee Dee Lowery																																			
Jul-20	0	0	0	0	0	0	0	0	0	0	0	0	0	0	0	0	0	0	0	0	0	0	0	0	0	0	0	0	0	0	0	0			
Aug-20	17	0	0	2	13	2	0	0	17	1	0	0	0	0	0	0	0	2	0	0	0	0	15	0	0	0	0	0	0	2	15	15			
Sep-20	0	0	0	0	0	0	0	0	0	0	0	0	0	0	0	0	0	0	0	0	0	0	0	0	0	0	0	0	0	0	0	0			
Oct-20	1	0	0	0	1	0	0	0	1	0	0	1	0	0	0	0	0	0	0	0	0	0	1	0	0	0	0	0	0	0	1	1			
Nov-20	3	0	0	0	3	0	0	0	3	0	0	0	0	0	0	0	0	0	0	0	0	0	3	0	0	0	0	0	0	0	3	3			
Dec-20	2	0	0	0	1	1	0	0	2	0	0	0	0	0	0	0	0	0	0	0	0	0	2	0	0	0	0	0	0	0	2	2			
Jan-21	5	0	0	1	3	1	0	0	5	0	0	0	0	0	0	0	0	1	0	0	0	4	0	0	0	0	0	0	0	1	4	4			
Feb-21	356	11	24	43	152	102	24	161	195	4	0	5	12	0	0	5	0	13	0	0	4	9	143	0	0	0	7	37	39	78	278	278			
Mar-21	969	13	46	94	392	316	108	569	400	3	0	10	5	3	0	4	0	20	1	0	19	71	228	0	23	0	11	73	88	153	816	816			
TOTAL	1353	24	70	140	565	422	132	730	623	8	0	16	17	3	0	9	0	33	4	0	23	80	396	0	23	0	18	110	127	234	1119	1119			
CFC #02 Child & Family Connections, Lake County Health Department, 3010 Grand Ave, 2nd Floor, Waukegan, IL 60085 - Donna Musser																																			
Aug-20	2	0	0	2	0	0	0	0	2	0	0	0	0	2	0	0	0	0	0	0	0	0	0	0	0	0	0	0	0	2	0	0			
Sep-20	2	0	0	0	0	2	0	0	2	0	0	0	0	0	0	0	0	0	0	0	0	2	0	0	0	0	0	0	0	0	2	2			
Oct-20	2	0	0	0	2	0	0	1	1	0	0	0	0	0	0	0	0	0	0	0	0	1	0	0	0	0	0	0	0	0	2	2			
Nov-20	10	0	0	0	5	5	0	4	6	0	0	0	0	0	0	0	0	0	0	0	0	2	4	0	0	0	0	0	0	0	10	10			
Dec-20	8	0	0	0	6	2	0	1	7	0	0	0	0	0	0	0	0	0	0	0	0	5	2	0	0	0	0	0	0	0	8	8			
Jan-21	7	0	0	0	6	1	0	0	7	0	0	0	0	0	0	0	0	0	0	0	0	3	4	0	0	0	0	0	0	0	7	7			
Feb-21	147	39	45	45	11	7	0	121	26	1	0	0	13	0	0	0	0	1	0	0	0	3	9	0	0	0	0	0	0	0	129	18			
Mar-21	153	41	48	45	9	5	1	120	33	2	0	0	17	0	0	0	0	1	0	0	0	7	4	0	0	0	1	0	1	134	15	15			
TOTAL	331	80	93	92	39	22	1	247	84	3	0	0	30	2	0	0	0	2	0	0	0	23	23	0	0	0	1	0	1	265	62	62			
CFC #03 Child & Family Connections, Regional Office of Education for Carroll, Jo Daviess, & Stephenson Co., 27 S State Ave, Ste 101, Freeport, IL 61032 - Angela Hodges																																			
Oct-20	67	56	8	1	2	0	0	65	2	0	0	0	1	0	0	0	0	0	0	0	1	0	0	0	0	0	0	0	0	65	2	2			
Nov-20	67	58	6	3	0	0	0	62	5	0	0	0	1	0	0	0	0	0	0	0	4	0	0	0	0	0	0	0	0	67	0	0			
Dec-20	72	50	20	1	1	0	0	67	5	0	0	0	0	0	0	0	0	0	0	0	5	0	0	0	0	0	0	0	0	71	1	1			
Jan-21	69	50	16	1	2	0	0	57	12	0	0	0	0	0	0	0	0	0	0	0	11	1	0	0	0	0	0	0	0	67	2	2			
Feb-21	86	63	10	3	6	3	1	73	13	0	0	0	1	0	0	0	0	0	0	0	6	1	5	0	0	0	0	0	0	76	10	10			
Mar-21	82	62	12	6	2	0	0	78	4	0	0	0	0	1	0	0	0	0	0	0	2	0	1	0	0	0	0	0	0	80	2	2			
TOTAL	443	339	72	15	13	3	1	402	41	0	0	0	3	1	0	0	0	0	0	0	29	2	6	0	0	0	0	0	0	426	17	17			
CFC #04 Child & Family Connections, DayOne PACT, 1551 E Fabyan Pkwy, Geneva, IL 60134 - Ellana Mavromatis																																			
Aug-20	1	0	0	0	0	1	0	0	1	0	0	0	0	0	0	0	0	0	0	0	0	1	0	0	0	0	0	0	0	0	1	1			
Sep-20	131	19	41	41	15	15	0	98	33	0	0	1	2	0	0	0	0	4	0	0	0	0	17	0	0	0	5	0	5	101	30	30			

Screenings Reported by CFC/CPS/DCFS and Month / FY2021 Q3

Month	Total Screened	Ages (in Months)							Not Referred	Total Referred	Screenings of Children involved with DCFS			# of Children Ages 0 to 3 Referred to										# of Children Ages 3 to 5 Referred to								Sub-Totals	
		0-11	12-23	24-35	36-47	48-60	61+	In Intact Family Services			Children of Teen Wards	In Foster Care	EI	LEA (ECSE)	EHS	PI (center-based)	Child Care Program	HV	Other Services	Multiple Services	Rescreening	LEA (ECSE)	PFA	HS	Child Care Program	HV	Other Services	Multiple Services	Rescreening	Ages 0-35 mos.	Ages 36-61+ mos.		
Oct-20	82	15	17	23	19	8	0	52	30	0	0	0	1	0	0	0	0	7	0	0	0	3	12	0	0	0	8	0	0	55	27		
Nov-20	82	13	23	20	14	11	1	56	25	1	0	0	7	0	0	0	0	0	0	0	9	5	0	0	0	0	0	0	56	26			
Dec-20	68	14	18	15	9	12	0	43	25	0	0	0	1	0	0	0	0	0	0	0	5	13	0	0	0	1	0	0	47	21			
Jan-21	156	23	27	21	43	31	11	93	63	0	0	2	12	0	0	0	0	4	0	0	0	17	13	0	0	0	0	0	17	71	85		
Feb-21	174	24	26	27	47	49	1	100	74	0	0	0	14	2	0	0	0	5	0	0	1	20	23	0	0	0	3	0	7	77	97		
Mar-21	33	0	0	0	15	16	2	9	24	0	0	1	0	0	0	0	0	0	0	0	1	14	0	0	0	0	0	9	0	33			
TOTAL	727	108	152	147	162	143	15	451	275	1	0	4	37	2	0	0	0	20	0	0	1	55	98	0	0	0	17	0	38	407	320		
CFC #05 Child & Family Connections, DayOne PACT, 750 Warrenville Rd, Ste 300, Lisle, IL 60532 - Marianne McGuire																																	
Jul-20	23	3	5	14	1	0	0	0	23	0	0	0	0	0	0	0	0	4	0	18	0	1	0	0	0	0	0	0	22	1			
Aug-20	75	3	3	22	25	20	2	2	73	0	0	0	1	5	0	0	0	0	2	0	20	20	24	1	0	0	0	0	28	47			
Sep-20	45	4	4	24	5	5	3	3	42	0	0	0	6	7	0	0	0	0	5	0	13	2	9	0	0	0	0	0	32	13			
Oct-20	91	10	14	32	18	11	4	21	70	0	0	0	7	10	0	0	0	5	1	0	18	19	8	0	0	0	0	0	2	56	33		
Nov-20	70	14	10	17	19	8	2	26	44	1	0	0	14	0	0	0	0	0	2	1	9	13	4	1	0	0	0	0	41	29			
Dec-20	98	19	25	30	12	11	1	42	56	1	0	0	34	1	0	1	0	2	0	0	5	11	2	0	0	0	0	0	74	24			
Jan-21	184	14	26	49	56	35	4	92	92	0	0	0	11	8	1	0	0	6	6	0	20	25	8	1	0	0	0	2	4	89	95		
Feb-21	275	22	39	71	92	46	5	128	147	2	0	0	31	6	0	0	0	4	11	1	16	34	37	2	0	0	0	0	7	132	143		
Mar-21	144	12	30	45	40	11	5	52	92	0	0	0	32	21	7	0	0	3	8	0	9	6	2	3	0	0	0	0	1	87	56		
TOTAL	1005	101	156	304	268	147	26	366	639	4	0	0	136	58	8	1	0	20	39	2	128	130	95	8	0	0	0	2	14	561	441		
CFC #06 Child & Family Connections, Clearbrook, 1835 W Central Rd, Arlington Heights, IL 60005 - Jason Tietz																																	
Mar-20	1	0	0	1	0	0	0	0	1	0	0	0	1	0	0	0	0	0	0	0	0	0	0	0	0	0	0	0	1	0			
Apr-20	5	0	0	0	5	0	0	5	0	0	0	0	0	0	0	0	0	0	0	0	0	0	0	0	0	0	0	0	0	5			
May-20	3	0	0	0	3	0	0	3	0	0	0	0	0	0	0	0	0	0	0	0	0	0	0	0	0	0	0	0	0	3			
Jun-20	6	0	0	0	5	1	0	6	0	0	0	0	0	0	0	0	0	0	0	0	0	0	0	0	0	0	0	0	0	6			
Aug-20	25	0	0	0	8	17	0	0	25	0	0	0	0	0	0	0	0	0	0	0	8	14	0	0	0	3	0	0	0	25			
Sep-20	6	0	0	0	3	3	0	0	6	0	0	0	0	0	0	0	0	0	0	0	4	1	0	0	0	1	0	0	0	6			
Oct-20	21	0	0	0	10	11	0	12	9	0	0	0	0	0	0	0	0	0	0	0	4	0	0	0	0	0	0	5	0	21			
Nov-20	44	1	3	9	15	13	3	12	32	0	0	0	0	3	0	0	0	0	0	0	3	19	0	0	0	2	0	2	13	31			
Dec-20	37	2	2	2	11	19	1	4	33	0	0	0	3	0	0	0	0	0	1	0	1	21	0	0	3	4	0	0	6	31			
Jan-21	67	1	6	18	22	18	2	37	30	0	0	0	0	3	0	0	0	0	0	0	6	8	0	0	0	3	0	5	25	42			
Feb-21	88	6	0	18	36	24	4	31	57	0	0	0	6	6	0	0	0	0	0	0	10	24	0	2	0	7	0	2	24	64			

Screenings Reported by CFC/CPS/DCFS and Month / FY2021 Q3

Month	Total Screened	Ages (in Months)						Not Referred	Total Referred	Screenings of Children involved with DCFS			# of Children Ages 0 to 3 Referred to								# of Children Ages 3 to 5 Referred to								Sub-Totals		
										In Intact Family Services	Children of Teen Wards	In Foster Care	LEA EI	LEA (ECSE)	EHS	PI (center-based)	Child Care Program	HV	Other Services	Multiple Services	Rescreening	LEA (ECSE)	PFA	HS	Child Care Program	HV	Other Services	Multiple Services	Rescreening	Ages 0-35 mos.	Ages 36-61+ mos.
		0-11	12-23	24-35	36-47	48-60	61+			0	0	0	10	14	0	0	0	0	3	0	11	45	106	0	2	3	21	0	15	88	289
Mar-21	74	6	2	11	34	15	6	37	37	0	0	0	0	2	0	0	0	0	2	0	3	9	19	0	0	0	1	0	1	19	55
TOTAL	377	16	13	59	152	121	16	147	230	0	0	0	10	14	0	0	0	0	3	0	11	45	106	0	2	3	21	0	15	88	289
CFC #07 Child & Family Connections, Suburban Access, Inc. One Westbrook Corporate Ctr. Ste 640, Westchester, IL 60154 - Jo Ann Alferink																															
Feb-21	17	0	0	0	2	9	6	0	17	0	0	0	0	0	0	0	0	0	0	0	0	4	13	0	0	0	0	0	0	0	17
TOTAL	17	0	0	0	2	9	6	0	17	0	0	0	0	0	0	0	0	0	0	0	0	4	13	0	0	0	0	0	0	0	17
CFC #12 Child & Family Connections, Easter Seals of Metropolitan Chicago, 17300 S Ozark Ave - North Bldg, Tinley Park, IL 60477 - Peter Byrne																															
Aug-20	43	0	0	0	26	17	0	0	43	0	0	0	0	0	0	0	0	0	0	0	0	2	41	0	0	0	0	0	0	0	43
Sep-20	14	0	0	0	9	5	0	0	14	0	0	0	0	0	0	0	0	0	0	0	1	13	0	0	0	0	0	0	0	0	14
Oct-20	34	0	0	0	19	14	1	15	19	0	0	0	0	0	0	0	0	0	0	0	1	18	0	0	0	0	0	0	0	0	34
Dec-20	5	0	0	0	5	0	0	0	5	0	0	0	0	0	0	0	0	0	0	0	0	5	0	0	0	0	0	0	0	0	5
Jan-21	1	0	0	1	0	0	0	0	1	0	0	0	0	0	0	0	0	0	0	0	0	1	0	0	0	0	0	0	0	1	0
Feb-21	30	1	7	4	8	9	1	10	17	0	0	0	1	2	0	0	0	0	0	0	1	9	0	0	0	4	0	0	12	18	
Mar-21	31	0	0	0	12	14	5	0	31	0	0	0	0	0	0	0	0	0	0	0	2	29	0	0	0	0	0	0	0	0	31
TOTAL	158	1	7	5	79	59	7	25	130	0	0	0	1	2	0	0	0	0	0	0	7	116	0	0	0	4	0	0	13	145	
CFC #13 Child & Family Connections, Regional Office of Education #26, 130 S Lafayette St, Ste 200, Macomb, IL 61455 - Chuck Farr																															
Jan-21	165	74	59	14	9	0	0	134	31	1	0	2	15	2	0	0	1	0	0	0	0	12	0	1	0	0	0	0	0	147	9
Feb-21	153	69	55	13	6	2	0	136	17	2	0	3	8	0	0	0	0	0	0	0	0	8	0	0	0	0	0	0	0	137	8
Mar-21	169	92	52	12	8	3	0	146	23	4	2	3	7	0	0	0	0	4	0	0	0	12	0	0	0	0	0	0	0	156	11
TOTAL	487	235	166	39	23	5	0	416	71	7	2	8	30	2	0	0	1	4	0	0	0	32	0	1	0	0	0	0	0	440	28
CFC #14 Child & Family Connections, 3000 W Rohmann Ave., West Peoria, IL 61604 - Michelle Harr																															
Jan-21	13	5	3	3	0	2	0	12	1	0	0	0	0	0	0	0	0	0	0	0	0	0	0	0	0	0	0	1	11	2	
Feb-21	121	4	4	25	63	24	1	30	91	37	0	5	0	1	0	1	0	0	3	0	1	14	71	0	0	0	0	0	0	33	88
Mar-21	139	0	3	10	77	41	8	25	114	45	0	9	0	0	0	2	0	0	1	0	1	11	92	0	0	0	3	4	4	13	126
TOTAL	273	9	10	38	140	67	9	67	206	82	0	14	0	1	0	3	0	0	4	0	2	25	163	0	0	0	3	4	5	57	216
CFC #15 Child & Family Connections, Services of Will, Grundy, & Kankakee Counties, Inc., 2300 Glenwood Ave, Joliet, IL 60435 - Rachel Cimino																															
Feb-21	196	0	0	10	68	99	19	92	104	0	0	0	0	0	0	0	0	0	0	1	24	57	10	2	0	9	0	1	10	186	
Mar-21	143	2	1	3	68	52	17	52	91	0	0	1	1	0	0	0	2	2	0	0	7	60	0	0	0	10	0	9	6	137	
TOTAL	339	2	1	13	136	151	36	144	195	0	0	1	1	0	0	0	2	2	0	0	31	117	10	2	0	19	0	10	16	323	
CFC #16 Child & Family Connections, 201 W Springfield Ave, Ste 508 & 509., Champaign, IL 61820 - Chris Johnson																															
Jan-21	16	0	0	0	7	6	3	0	16	0	0	0	0	0	0	0	0	0	0	0	1	7	0	7	0	0	0	1	0	16	

Screenings Reported by CFC/CPS/DCFS and Month / FY2021 Q3

Month	Total Screened	Ages (in Months)						Not Referred	Total Referred	Screenings of Children involved with DCFS			# of Children Ages 0 to 3 Referred to								# of Children Ages 3 to 5 Referred to								Sub-Totals																																																																																																																																																																																																																																																																																																																																																																																																																																																																																																																																																																																																																																																																																																																																																																																																																																																																																																																																																																																																																																																																																																																																																																																																																																																																																																																																																																																																																																							
										In Intact Family Services	Children of Teen Wards	In Foster Care	EI	LEA (ECSE)	PI (center-based)	Child Care Program	HV	Other Services	Multiple Services	Rescreening	LEA (ECSE)	PFA	HS	Child Care Program	HV	Other Services	Multiple Services	Rescreening	Ages 0-35 mos.	Ages 36-61+ mos.																																																																																																																																																																																																																																																																																																																																																																																																																																																																																																																																																																																																																																																																																																																																																																																																																																																																																																																																																																																																																																																																																																																																																																																																																																																																																																																																																																																																																																						
				0-11	12-23	24-35	36-47			48-60	61+																																																																																																																																																																																																																																																																																																																																																																																																																																																																																																																																																																																																																																																																																																																																																																																																																																																																																																																																																																																																																																																																																																																																																																																																																																																																																																																																																																																																																																																									

Screenings Reported by CFC/CPS/DCFS and Month / FY2021 Q3

Month	Total Screened	Ages (in Months)						Not Referred	Total Referred	Screenings of Children involved with DCFS			# of Children Ages 0 to 3 Referred to										# of Children Ages 3 to 5 Referred to								Sub-Totals	
										In Intact Family Services	Children of Teen Wards	In Foster Care	LEA EI	LEA (ECSE)	EHS	PI (center-based)	Child Care Program	HV	Other Services	Multiple Services	Rescreening	LEA (ECSE)	PFA	HS	Child Care Program	HV	Other Services	Multiple Services	Rescreening	Ages 0-35 mos.	Ages 36-61+ mos.	
		0-11	12-23	24-35	36-47	48-60	61+																									
Mar-21	210	7	10	15	120	74	0	27	183	0	0	0	0	0	0	0	0	0	0	0	2	14	140	0	0	0	0	0	56	32	194	
TOTAL	305	20	27	34	139	98	2	109	196	0	0	0	0	0	0	0	0	0	0	0	2	15	152	0	0	0	0	0	64	81	239	
CFC #24 Child & Family Connections, Archway, Inc., 2751 W Main, PO Box 1180, Carbondale, IL 62901-1180 - Lindsay Baskin																																
Jan-21	34	8	7	10	5	4	0	0	32	0	0	0	0	0	0	17	0	6	0	3	3	0	9	0	0	0	0	0	0	25	9	
Feb-21	16	0	0	10	4	2	0	10	6	0	0	0	0	0	0	0	0	0	0	0	0	0	1	0	0	0	0	0	10	6		
Mar-21	48	9	8	8	10	13	0	5	29	0	0	0	1	1	0	0	0	9	0	9	9	0	18	0	0	0	0	2	1	25	23	
TOTAL	98	17	15	28	19	19	0	15	67	0	0	0	1	1	0	17	0	15	0	12	12	0	28	0	0	0	0	2	1	60	38	
CFC #25 Child & Family Connections, Options & Advocacy for McHenry Co., 365 Millennium Dr. Ste A, Crystal Lake, IL 60012 - Susan Beckman																																
Feb-21	118	11	16	23	44	24	0	18	100	0	0	0	47	0	0	0	0	0	3	0	0	14	33	0	0	0	4	1	1	50	68	
Mar-21	129	12	28	38	32	13	2	18	111	0	0	0	68	0	0	0	0	0	0	1	0	5	33	0	0	0	0	2	2	78	47	
TOTAL	247	23	44	61	76	37	2	36	211	0	0	0	115	0	0	0	0	0	3	1	0	19	66	0	0	0	4	3	3	128	115	

Screenings Reported by CFC/CPS/DCFS and Agencies Represented / FY2021 Q3

Agency Type	Total Screened	Screenings of Children involved with DCFS										# of Children Ages 0 to 3 Referred to								# of Children Ages 3 to 5 Referred to								Sub-Totals				
		Ages (in Months)							Not Referred	Total Referred	In Intact Family Services	Children of Teen Wards	In Foster Care	PI Child				Other Multiple				LEA (ECSE)	PFA	HS	Child Care Program	HV	Other Services	Multiple Services	Rescreening	Ages 0-35 mos.	Ages 36-61+ mos.	
		0-11	12-23	24-35	36-47	48-60	61+	EI						(ECSE)	EHS	(center-based)	Program	HV	Services	Services	Rescreening											
CFC #01 Child & Family Connections, Youth Services Network, Inc., 107 North 3rd Street, Rockford, IL 61107 - Dee Dee Lowery																																
CC	4	1	1	2	0	0	0	4	0	0	0	0	0	0	0	0	0	0	0	0	0	0	0	0	0	0	0	0	0	4	0	
HS/EHS	91	1	31	42	13	3	1	56	35	1	0	3	6	0	0	0	0	0	0	0	0	23	1	0	0	0	0	0	0	5	74	17
HV	62	8	12	13	29	0	0	27	35	0	0	0	0	0	0	0	33	0	0	0	0	0	0	0	0	2	0	0	33	29		
LEA	1196	14	26	83	523	419	131	643	553	7	0	13	11	3	0	9	0	0	4	0	0	79	396	0	23	0	16	110	122	123	1073	
PAT	4	0	2	2	0	0	0	0	4	0	0	0	0	0	0	0	4	0	0	0	0	0	0	0	0	0	0	0	4	0		
PI	0	0	0	0	0	0	0	0	0	0	0	0	0	0	0	0	0	0	0	0	0	0	0	0	0	0	0	0	0	0		
CFC #02 Child & Family Connections, Lake County Health Department, 3010 Grand Ave, 2nd Floor, Waukegan, IL 60085 - Donna Musser																																
CFC	263	80	93	90	0	0	0	231	32	3	0	0	30	0	0	0	0	2	0	0	0	0	0	0	0	0	0	0	0	263	0	
EI	263	80	93	90	0	0	0	231	32	3	0	0	30	0	0	0	0	2	0	0	0	0	0	0	0	0	0	0	0	263	0	
LEA	68	0	0	2	39	22	1	16	52	0	0	0	0	2	0	0	0	0	0	0	0	23	23	0	0	0	1	0	1	2	62	
CFC #03 Child & Family Connections, Regional Office of Education for Carroll, Jo Daviess, & Stephenson Co., 27 S State Ave, Ste 101, Freeport, IL 61032 - Angela Hodges																																
HD	433	339	72	13	8	1	0	402	31	0	0	0	3	0	0	0	0	0	0	0	28	0	0	0	0	0	0	0	0	424	9	
LEA	10	0	0	2	5	2	1	0	10	0	0	0	0	1	0	0	0	0	0	0	1	2	6	0	0	0	0	0	2	8		
CFC #04 Child & Family Connections, DayOne PACT, 1551 E Fabyan Pkwy, Geneva, IL 60134 - Ellana Mavromatis																																
CFC	127	16	31	18	27	25	10	91	36	0	0	0	22	0	0	0	0	0	0	0	0	14	0	0	0	0	0	0	0	65	62	
HD	1	0	0	0	0	1	0	0	0	1	0	0	0	0	0	0	0	0	0	0	0	0	0	0	0	0	0	0	0	1		
HV	200	54	74	71	1	0	0	169	31	0	0	0	4	0	0	0	0	20	0	0	0	0	0	0	0	0	0	0	199	1		
LEA	256	0	5	10	128	108	5	57	199	0	0	4	2	2	0	0	0	0	0	0	1	41	98	0	0	0	17	0	38	15	241	
MFP	27	2	4	6	6	9	0	27	0	0	0	0	0	0	0	0	0	0	0	0	0	0	0	0	0	0	0	0	12	15		
PAT	116	36	38	42	0	0	0	107	9	0	0	0	9	0	0	0	0	0	0	0	0	0	0	0	0	0	0	0	116	0		
CFC #05 Child & Family Connections, DayOne PACT, 750 Warrenville Rd, Ste 300, Lisle, IL 60532 - Marianne McGuire																																
CC	66	4	14	9	21	14	4	56	10	0	0	0	5	0	0	0	0	0	0	0	2	1	0	0	0	0	0	0	2	27	39	
EI	243	34	68	71	42	20	8	108	135	0	0	0	88	21	7	0	0	0	0	0	0	19	0	0	0	0	0	0	0	173	70	
HS/EHS	66	2	12	9	25	14	4	59	7	0	0	0	1	0	0	0	0	0	0	0	3	1	0	0	0	0	0	0	2	23	43	
HV	277	50	55	140	32	0	0	84	193	4	0	0	22	5	0	0	0	0	30	2	118	0	8	5	0	0	0	0	3	245	32	
LEA	360	1	3	59	167	113	14	102	258	0	0	0	5	32	1	0	0	0	8	0	3	110	86	3	0	0	0	2	8	63	294	
MFP	9	0	5	3	1	0	0	3	6	0	0	0	3	0	0	0	0	0	0	0	2	0	0	0	0	0	0	0	1	8	1	
PAT	191	12	9	40	70	49	9	15	176	0	0	0	13	20	0	1	0	20	1	0	2	62	59	0	0	0	0	0	0	61	128	

Screenings Reported by CFC/CPS/DCFS and Agencies Represented / FY2021 Q3

Agency Type	Total Screened	Ages (in Months)						Not Referred	Total Referred	Screenings of Children involved with DCFS			# of Children Ages 0 to 3 Referred to								# of Children Ages 3 to 5 Referred to								Sub-Totals		
										In Intact Family Services	Children of Teen Wards	In Foster Care	LEA EI	(ECSE)	EHS	PI (center-based)	Child Care Program	HV	Other Services	Multiple Services	Foster Rescreening	LEA (ECSE)	PFA	HS	Child Care Program	HV	Other Services	Multiple Services	Foster Rescreening	Ages 0-35 mos.	Ages 36-61+ mos.
		0-11	12-23	24-35	36-47	48-60	61+																								
CFC #06	Child & Family Connections, Clearbrook, 1835 W Central Rd, Arlington Heights, IL 60005 - Jason Tietz																														
LEA	377	16	13	59	152	121	16	147	230	0	0	0	10	14	0	0	0	0	3	0	11	45	106	0	2	3	21	0	15	88	289
CFC #07	Child & Family Connections, Suburban Access, Inc, One Westbrook Corporate Ctr, Ste 640, Westchester, IL 60154 - Jo Ann Alferink																														
LEA	17	0	0	0	2	9	6	0	17	0	0	0	0	0	0	0	0	0	0	0	4	13	0	0	0	0	0	0	0	0	17
CFC #12	Child & Family Connections, Easter Seals of Metropolitan Chicago, 17300 S Ozark Ave - North Bldg, Tinley Park, IL 60477 - Peter Byrne																														
HV	8	1	7	0	0	0	0	7	1	0	0	0	1	0	0	0	0	0	0	0	0	0	0	0	0	0	0	0	8	0	
LEA	150	0	0	5	79	59	7	18	129	0	0	0	0	2	0	0	0	0	0	0	7	116	0	0	0	4	0	0	5	145	
CFC #13	Child & Family Connections, Regional Office of Education #26, 130 S Lafayette St, Ste 200, Macomb, IL 61455 - Chuck Farr																														
FCM	415	223	157	16	0	0	0	386	29	0	0	0	29	0	0	0	0	0	0	0	0	0	0	0	0	0	0	0	396	0	
LEA	27	0	0	1	21	5	0	0	27	1	0	0	0	0	0	0	0	0	0	0	0	27	0	0	0	0	0	0	1	26	
PI	45	12	9	22	2	0	0	30	15	6	2	8	1	2	0	0	1	4	0	0	0	5	0	1	0	0	0	0	43	2	
CFC #14	Child & Family Connections, 3000 W Rohmann Ave, , West Peoria, IL 61604 - Michelle Harr																														
HV	19	3	6	8	2	0	0	19	0	3	0	0	0	0	0	0	0	0	0	0	0	0	0	0	0	0	0	0	17	2	
LEA	253	6	4	30	138	66	9	48	205	79	0	14	0	1	0	3	0	4	0	2	25	163	0	0	0	3	4	4	40	213	
MFP	1	0	0	0	0	1	0	0	1	0	0	0	0	0	0	0	0	0	0	0	0	0	0	0	0	0	1	0	1		
CFC #15	Child & Family Connections, Services of Will, Grundy, & Kankakee Counties, Inc., 2300 Glenwood Ave, Joliet, IL 60435 - Rachel Cimino																														
EI	3	2	1	0	0	0	0	0	3	0	0	1	1	0	0	0	0	2	0	0	0	0	0	0	0	0	0	0	3	0	
HS/EHS	20	0	0	0	10	10	0	4	16	0	0	0	0	0	0	0	0	0	0	0	0	5	10	0	0	0	0	1	0	20	
LEA	331	0	0	13	133	149	36	140	191	0	0	0	0	0	0	0	2	0	0	0	1	31	117	10	2	0	19	0	9	13	318
CFC #16	Child & Family Connections, 201 W Springfield Ave, Ste 508 & 509, , Champaign, IL 61820 - Chris Johnson																														
FCM	186	61	58	39	7	21	0	185	1	0	0	0	1	0	0	0	0	0	0	0	0	0	0	0	0	0	0	0	158	28	
HC	77	0	0	20	39	18	0	18	59	0	0	1	0	0	0	0	0	14	1	2	0	38	0	0	0	12	14	8	20	57	
HD	104	22	5	20	39	18	0	45	59	0	0	1	0	0	0	0	0	14	1	2	0	38	0	0	0	12	14	8	47	57	
HFI	0	0	0	0	0	0	0	0	0	0	0	0	0	0	0	0	0	0	0	0	0	0	0	0	0	0	0	0	0	0	
LEA	58	0	0	3	35	15	5	0	58	0	0	0	0	1	0	0	0	1	0	1	5	33	0	15	0	0	0	2	3	55	
WIC	186	61	58	39	7	21	0	185	1	0	0	0	1	0	0	0	0	0	0	0	0	0	0	0	0	0	0	0	158	28	
CFC #17	Child & Family Connections, ROE of Adams/Pike Counties, 510 Maine St, Ste 615, Quincy, IL 62301 - Kara Hoffman																														
HS/EHS	76	0	0	20	41	14	1	50	26	1	0	0	0	1	0	0	0	0	0	7	3	0	0	0	0	0	0	15	20	56	

Screenings Reported by CFC/CPS/DCFS and Agencies Represented / FY2021 Q3

Agency Type	Total Screened	Ages (in Months)							Not Referred	Total Referred	Screenings of Children involved with DCFS			# of Children Ages 0 to 3 Referred to										# of Children Ages 3 to 5 Referred to								Sub-Totals	
		0-11	12-23	24-35	36-47	48-60	61+	In Intact Family Services			Children of Teen Wards	In Foster Care	LEA EI	(ECSE)	EHS	PI (center-based)	Child Care Program	HV	Other Services	Multiple Services	Rescreening	LEA (ECSE)	PFA	HS	Child Care Program	HV	Other Services	Multiple Services	Rescreening	Ages 0-35 mos.	Ages 36-61+ mos.		
HV	6	0	2	2	2	0	0	6	0	0	0	0	0	0	0	0	0	0	0	0	0	0	0	0	0	0	0	4	2				
LEA	155	0	0	34	78	40	3	112	43	3	0	2	0	1	0	0	0	0	0	7	4	0	0	0	0	0	31	34	121				
CFC #18 Child & Family Connections, Sangamon Co. Public Health Department, 2833 S Grand Ave, E, Springfield, IL 62703 - Lisa McGlothlin																																	
LEA	63	0	0	1	45	14	3	0	63	0	0	0	0	0	0	0	0	0	0	6	56	0	1	0	0	0	0	1	62				
PI	6	0	3	3	0	0	0	0	6	0	0	0	0	0	0	6	0	0	0	0	0	0	0	0	0	0	6	0					
CFC #19 Child & Family Connections, Macon Co. Community Mental Health Board, 132 S Water St, Ste 604, Decatur, IL 62523 - Amy Farmer																																	
LEA	1257	1	9	283	479	211	262	218	1040	6	0	5	13	63	0	0	0	0	156	20	2	53	744	0	0	0	44	35	1	293	952		
CFC #20 Child & Family Connections, Community Support Systems, 1901 S 4th St, Ste 209, Effingham, IL 62401 - Rita Wahl																																	
LEA	288	0	0	44	121	51	74	57	235	0	0	0	0	1	0	0	0	0	40	0	4	14	162	17	0	0	3	3	1	44	246		
CFC #21 Child & Family Connections, Regional Office of Education #13, 4 Eagle Center, Ste 4, O'Fallon, IL 62269 - Terri Kampwerth																																	
HV	15	7	3	4	1	0	0	11	4	0	0	0	0	0	0	0	0	0	4	0	0	0	0	0	0	0	14	1					
LEA	173	6	12	24	80	41	9	75	96	1	0	7	5	3	0	0	0	0	2	0	11	85	10	0	0	6	7	7	42	130			
PI	15	7	3	4	1	0	0	11	4	0	0	0	0	0	0	0	0	0	4	0	0	0	0	0	0	0	14	1					
WIC	397	156	113	50	48	26	0	393	4	0	0	0	4	0	0	0	0	0	0	0	0	0	0	0	0	0	319	74					
CFC #23 Child & Family Connections, Wabash & Ohio Valley Special Education Dist., 800 S Division St, Norris City, IL 62869 - Charity Heifner																																	
CFC	0	6	6	4	0	0	0	0	0	0	0	0	0	0	0	0	0	0	2	0	0	0	0	0	0	0	0	16	0				
HS/EHS	105	14	21	23	18	29	0	105	0	0	0	0	0	0	0	0	0	0	0	0	0	0	0	0	0	0	0	58	47				
LEA	200	0	0	7	121	69	2	4	196	0	0	0	0	0	0	0	0	0	0	15	152	0	0	0	0	0	64	7	192				
CFC #24 Child & Family Connections, Archway, Inc., 2751 W Main, PO Box 1180, Carbondale, IL 62901-1180 - Lindsay Baskin																																	
HS/EHS	5	0	0	0	0	5	0	5	0	0	0	0	0	0	0	0	0	0	0	0	0	0	0	0	0	0	0	0	5				
HV	46	14	10	22	0	0	0	10	20	0	0	0	0	0	0	17	0	3	0	0	0	0	0	0	0	0	0	46	0				
LEA	47	3	5	6	19	14	0	0	47	0	0	0	1	1	0	0	0	12	0	12	12	0	28	0	0	0	2	1	14	33			
CFC #25 Child & Family Connections, Options & Advocacy for McHenry Co., 365 Millennium Dr, Ste A, Crystal Lake, IL 60012 - Susan Beckman																																	
CFC	115	23	44	48	0	0	0	0	115	0	0	0	115	0	0	0	0	0	0	0	0	0	0	0	0	0	0	115	0				
LEA	132	0	0	13	76	37	2	36	96	0	0	0	0	0	0	0	0	3	1	0	19	66	0	0	0	4	3	3	13	115			

Screenings Reported by CFC/CPS/DCFS and Screening Tools Utilized / FY2021 Q3

Screening Tool	Total Screened	Ages (in Months)							Not Referred	Total Referred	Screenings of Children involved with DCFS			# of Children Ages 0 to 3 Referred to										# of Children Ages 3 to 5 Referred to							
		0-11	12-23	24-35	36-47	48-60	61+	In Intact Family Services			Children of Teen Wards	In Foster Care	LEA EI	(ECSE)	EHS	PI (center-based)	Child Care Program	HV	Other Services	Multiple Services	Rescreening	LEA (ECSE)	PFA	HS	Child Care Program	HV	Other Services	Multiple Services	Rescreening		
CFC #01 Child & Family Connections, Youth Services Network, Inc., 107 North 3rd Street, Rockford, IL 61107 - Dee Dee Lowery																															
ASQ-3	726	24	70	94	301	202	35	299	427	6	0	11	16	0	0	9	0	33	0	0	23	18	312	0	0	0	16	108	108		
ASQ:SE	502	11	23	35	227	176	30	212	290	5	0	7	7	0	0	0	0	4	0	0	0	5	279	0	0	0	0	108	103		
ASQ:SE-2	58	8	10	11	29	0	0	27	31	0	0	0	0	0	0	0	29	0	0	0	0	0	0	0	0	2	0	0			
BRIG	0	0	0	0	0	0	0	0	0	0	0	0	0	0	0	0	0	0	0	0	0	0	0	0	0	0	0	0			
DIAL	7	0	0	3	1	2	1	6	1	0	0	0	0	0	0	0	0	0	0	0	0	0	0	0	0	1	0	0			
DIAL-4	405	3	5	33	226	109	29	231	174	2	0	2	4	2	0	9	0	0	4	0	0	46	83	0	23	0	1	2	4		
ESI	89	1	31	42	11	3	1	54	35	1	0	3	6	0	0	0	0	0	0	0	23	1	0	0	0	0	0	0	5		
ESI-R	498	11	21	33	227	176	30	212	286	5	0	7	7	0	0	0	0	0	0	0	0	5	279	0	0	0	0	108	103		
PLS	273	0	0	14	68	120	71	196	77	0	0	4	0	1	0	0	0	0	0	0	0	27	34	0	0	0	0	0	15		
PLS-4	0	0	0	0	0	0	0	0	0	0	0	0	0	0	0	0	0	0	0	0	0	0	0	0	0	0	0	0			
PQ	4	0	0	0	4	0	0	0	4	1	0	0	0	0	0	0	0	0	0	0	0	2	2	0	0	0	0	0	0		
Speed DIAL-4	288	0	0	14	71	132	71	196	92	0	0	4	0	1	0	0	0	0	0	0	0	28	34	0	0	0	14	0	15		
CFC #02 Child & Family Connections, Lake County Health Department, 3010 Grand Ave, 2nd Floor, Waukegan, IL 60085 - Donna Musser																															
ASQ-3	285	80	93	92	14	6	0	240	45	3	0	0	30	2	0	0	0	2	0	0	0	11	0	0	0	0	0	0	0		
ASQ:SE	5	0	0	0	3	2	0	1	4	0	0	0	0	0	0	0	0	0	0	0	0	4	0	0	0	0	0	0	0		
ASQ:SE-2	22	0	0	2	14	6	0	9	13	0	0	0	0	2	0	0	0	0	0	0	11	0	0	0	0	0	0	0	0		
DIAL	5	0	0	0	3	2	0	1	4	0	0	0	0	0	0	0	0	0	0	0	0	4	0	0	0	0	0	0	0		
DIAL-4	41	0	0	0	22	14	1	6	35	0	0	0	0	0	0	0	0	0	0	0	12	19	0	0	0	1	0	1			
CFC #03 Child & Family Connections, Regional Office of Education for Carroll, Jo Daviess, & Stephenson Co., 27 S State Ave, Ste 101, Freeport, IL 61032 - Angela Hodges																															
ASQ-3	433	339	72	13	8	1	0	402	31	0	0	0	3	0	0	0	0	0	0	0	28	0	0	0	0	0	0	0	0		
DIAL-4	10	0	0	2	5	2	1	0	10	0	0	0	0	1	0	0	0	0	0	0	1	2	6	0	0	0	0	0	0		
CFC #04 Child & Family Connections, DayOne PACT, 1551 E Fabyan Pkwy, Geneva, IL 60134 - Ellana Mavromatis																															
ASQ	12	0	1	2	4	5	0	0	12	0	0	0	1	1	0	0	0	0	0	0	1	4	0	0	0	0	0	0	5		
ASQ-3	495	82	124	114	86	75	14	351	143	1	0	1	27	1	0	0	0	20	0	0	0	35	40	0	0	0	3	0	10		
ASQ:SE	90	14	23	22	12	15	4	70	20	0	0	1	1	1	0	0	0	0	0	0	13	0	0	0	0	0	0	0	5		
ASQ:SE-2	191	57	52	58	16	8	0	142	49	0	0	0	11	0	0	0	0	16	0	0	0	0	10	0	0	0	0	0	5		
BAT	24	0	0	3	8	9	4	8	16	0	0	1	1	1	0	0	0	0	0	0	9	0	0	0	0	0	0	0	5		
BDI-2	9	0	0	0	3	6	0	5	4	0	0	0	0	0	0	0	0	0	0	0	4	0	0	0	0	0	0	0	0		
BRIG-PRF	43	0	0	0	18	24	1	4	39	0	0	3	0	0	0	0	0	0	0	0	0	16	0	0	0	0	0	0	23		
DIAL	9	0	0	0	4	5	0	4	5	0	0	0	0	0	0	0	0	0	0	0	5	0	0	0	0	0	0	0	0		

Screenings Reported by CFC/CPS/DCFS and Screening Tools Utilized / FY2021 Q3

Screening Tool	Total Screened	Ages (in Months)							Not Referred	Total Referred	Screenings of Children involved with DCFS			# of Children Ages 0 to 3 Referred to										# of Children Ages 3 to 5 Referred to							
		0-11	12-23	24-35	36-47	48-60	61+	In Intact Family Services			Children of Teen Wards	In Foster Care	EI	LEA (ECSE)	EHS	PI (center-based)	Child Care Program	HV	Other Services	Multiple Services	Rescreening	LEA (ECSE)	PFA	HS	Child Care Program	HV	Other Services	Multiple Services	Rescreening		
DIAL-4	56	0	0	0	36	20	0	12	44	0	0	0	0	0	0	0	0	0	0	0	7	28	0	0	0	9	0	0			
PLS-5	24	0	0	0	16	8	0	9	15	0	0	0	0	0	0	0	0	0	0	0	0	10	0	0	0	0	0	5			
Speed DIAL-4	19	0	0	0	11	8	0	0	19	0	0	0	0	0	0	0	0	0	0	0	0	14	0	0	0	5	0	0			
CFC #05 Child & Family Connections, DayOne PACT, 750 Warrenville Rd, Ste 300, Lisle, IL 60532 - Marianne McGuire																															
ASQ	107	2	6	17	41	38	3	69	38	0	0	0	9	1	0	0	0	0	0	0	21	0	0	0	0	0	0	7			
ASQ-3	816	99	150	272	185	87	21	278	538	4	0	0	127	51	8	1	0	20	33	2	126	90	68	5	0	0	2	7			
ASQ:SE	419	32	37	99	142	93	13	174	245	0	0	0	25	22	0	1	0	20	1	0	10	88	66	3	0	0	0	11			
ASQ:SE-2	189	22	35	74	37	17	4	56	133	3	0	0	16	2	0	0	0	0	18	1	78	4	7	3	0	0	2	2			
CIP	57	0	0	14	28	15	0	10	47	0	0	0	0	6	0	0	0	0	6	0	2	14	19	0	0	0	0	0			
DECA I/T - DECA-C	10	2	4	4	0	0	0	6	4	0	0	0	4	0	0	0	0	0	0	0	0	0	0	0	0	0	0	0			
DIAL	3	0	0	0	2	0	1	2	1	0	0	0	0	0	0	0	0	0	0	0	0	1	0	0	0	0	0	0			
DIAL-4	2	0	0	0	2	0	0	2	0	0	0	0	0	0	0	0	0	0	0	0	0	0	0	0	0	0	0	0			
ESI-R	10	2	4	4	0	0	0	6	4	0	0	0	4	0	0	0	0	0	0	0	0	0	0	0	0	0	0	0			
Play-Based	5	0	0	1	3	1	0	5	0	0	0	0	0	0	0	0	0	0	0	0	0	0	0	0	0	0	0	0			
TPBA	97	0	2	13	41	38	3	63	34	0	0	0	5	1	0	0	0	0	0	0	0	21	0	0	0	0	0	7			
CFC #06 Child & Family Connections, Clearbrook, 1835 W Central Rd, Arlington Heights, IL 60005 - Jason Tietz																															
ASQ	14	0	0	0	7	7	0	1	13	0	0	0	0	0	0	0	0	0	0	0	2	11	0	0	0	0	0	0			
ASQ-3	133	0	0	15	66	48	4	57	76	0	0	0	6	0	0	0	0	0	0	0	32	26	0	0	0	7	0	5			
ASQ:SE	12	0	0	0	5	5	2	3	9	0	0	0	0	0	0	0	0	0	0	0	6	3	0	0	0	0	0	0			
ASQ:SE-2	183	16	13	14	92	42	6	106	77	0	0	0	5	0	0	0	0	0	0	0	4	46	0	2	3	16	0	1			
DIAL	44	0	0	28	6	6	4	9	35	0	0	0	0	14	0	0	0	0	0	0	11	4	0	0	0	0	0	6			
DIAL-4	44	0	0	3	18	21	2	7	37	0	0	0	0	0	0	0	0	3	0	0	5	29	0	0	0	0	0	0			
Social His	3	0	0	0	1	2	0	0	3	0	0	0	0	0	0	0	0	0	0	0	1	2	0	0	0	0	0	0			
Speed DIAL-4	43	0	0	2	16	24	1	0	43	0	0	0	2	0	0	0	0	0	0	0	14	22	0	0	0	5	0	0			
TPBA	41	0	0	1	33	7	0	34	7	0	0	0	1	0	0	0	0	0	0	0	4	0	0	0	0	2	0	0			
TPBA-2	6	0	0	0	0	6	0	1	5	0	0	0	0	0	0	0	0	0	0	0	2	0	0	0	0	0	0	3			
CFC #07 Child & Family Connections, Suburban Access, Inc, One Westbrook Corporate Ctr, Ste 640, Westchester, IL 60154 - Jo Ann Alferink																															
DIAL-4	17	0	0	0	2	9	6	0	17	0	0	0	0	0	0	0	0	0	0	0	4	13	0	0	0	0	0	0			
CFC #12 Child & Family Connections, Easter Seals of Metropolitan Chicago, 17300 S Ozark Ave - North Bldg, Tinley Park, IL 60477 - Peter Byrne																															
ASQ	7	0	0	0	5	2	0	1	6	0	0	0	0	0	0	0	0	0	0	0	0	6	0	0	0	0	0	0			

Screenings Reported by CFC/CPS/DCFS and Screening Tools Utilized / FY2021 Q3

Screening Tool	Total Screened	Screenings of Children involved with DCFS											# of Children Ages 0 to 3 Referred to										# of Children Ages 3 to 5 Referred to							
		Ages (in Months)						Not Referred	Total Referred	In Intact Family Services	Children of Teen Wards	In Foster Care	EI	LEA (ECSE)	EHS	PI (center-based)	Child Care Program	HV	Other Services	Multiple Services	Rescreening	LEA (ECSE)	PFA	HS	Child Care Program	HV	Other Services	Multiple Services	Rescreening	
		0-11	12-23	24-35	36-47	48-60	61+																							
ASQ-3	8	1	7	0	0	0	0	7	1	0	0	0	1	0	0	0	0	0	0	0	0	0	0	0	0	0	0	0	0	0
ASQ:SE-2	7	0	0	0	5	2	0	1	6	0	0	0	0	0	0	0	0	0	0	0	0	0	6	0	0	0	0	0	0	0
DIAL	7	0	0	2	2	2	1	2	5	0	0	0	0	0	0	0	0	0	0	0	0	1	4	0	0	0	0	0	0	0
DIAL-4	139	0	0	3	73	57	6	16	120	0	0	0	0	2	0	0	0	0	0	0	0	6	108	0	0	0	4	0	0	0
CFC #13 Child & Family Connections, Regional Office of Education #26, 130 S Lafayette St, Ste 200, Macomb, IL 61455 - Chuck Farr																														
ASQ	460	235	166	38	2	0	0	416	44	6	2	8	30	2	0	0	1	4	0	0	0	0	5	0	1	0	0	0	0	0
ASQ:SE	45	12	9	22	2	0	0	30	15	6	2	8	1	2	0	0	1	4	0	0	0	0	5	0	1	0	0	0	0	0
DIAL-4	13	0	0	0	12	1	0	0	13	0	0	0	0	0	0	0	0	0	0	0	0	13	0	0	0	0	0	0	0	0
Speed DIAL-4	14	0	0	1	9	4	0	0	14	1	0	0	0	0	0	0	0	0	0	0	0	14	0	0	0	0	0	0	0	0
CFC #14 Child & Family Connections, 3000 W Rohmann Ave., West Peoria, IL 61604 - Michelle Harr																														
ASQ	27	6	4	14	0	3	0	25	2	0	0	0	0	0	0	0	0	0	0	0	0	0	0	0	0	0	0	0	0	2
ASQ-3	34	3	6	8	12	5	0	34	0	3	0	0	0	0	0	0	0	0	0	0	0	0	0	0	0	0	0	0	0	0
BRIG	26	6	4	14	0	2	0	25	1	0	0	0	0	0	0	0	0	0	0	0	0	0	0	0	0	0	0	0	0	1
BRIG-3	166	0	0	16	104	40	6	2	164	79	0	14	0	1	0	3	0	0	4	0	2	20	130	0	0	0	1	4	3	3
DIAL-4	15	0	0	0	10	5	0	15	0	0	0	0	0	0	0	0	0	0	0	0	0	0	0	0	0	0	0	0	0	0
ESI-R	45	0	0	0	24	19	2	5	40	0	0	0	0	0	0	0	0	0	0	0	0	5	33	0	0	0	2	0	0	0
Hearing	26	6	4	14	0	2	0	25	1	0	0	0	0	0	0	0	0	0	0	0	0	0	0	0	0	0	0	0	0	1
PLS-4	1	0	0	0	0	1	0	0	1	0	0	0	0	0	0	0	0	0	0	0	0	0	0	0	0	0	0	0	0	1
SESI	1	0	0	0	0	0	1	1	0	0	0	0	0	0	0	0	0	0	0	0	0	0	0	0	0	0	0	0	0	0
CFC #15 Child & Family Connections, Services of Will, Grundy, & Kankakee Counties, Inc., 2300 Glenwood Ave, Joliet, IL 60435 - Rachel Cimino																														
ASQ	20	2	1	1	8	8	0	0	20	0	0	1	1	0	0	0	0	2	0	0	1	0	16	0	0	0	0	0	0	0
ASQ:SE	245	0	0	3	93	118	31	140	105	0	0	0	0	0	0	0	2	0	0	0	0	13	62	0	0	0	19	0	9	9
BRIG	260	0	0	9	99	121	31	140	120	0	0	0	0	0	0	0	2	0	0	0	0	13	77	0	0	0	19	0	9	9
BRIG-3	15	0	0	0	7	8	0	0	15	0	0	0	0	0	0	0	0	0	0	0	0	0	5	10	0	0	0	0	0	0
DIAL	18	0	0	0	7	10	1	0	18	0	0	0	0	0	0	0	0	0	0	0	0	4	12	0	2	0	0	0	0	0
DIAL-4	38	0	0	3	19	12	4	4	34	0	0	0	0	0	0	0	0	0	0	0	0	14	19	0	0	0	0	0	0	1
CFC #16 Child & Family Connections, 201 W Springfield Ave, Ste 508 & 509, Champaign, IL 61820 - Chris Johnson																														
ASQ	77	0	0	20	39	18	0	18	59	0	0	1	0	0	0	0	0	0	14	1	2	0	38	0	0	0	12	14	8	8
ASQ-3	186	61	58	39	7	21	0	185	1	0	0	0	1	0	0	0	0	0	0	0	0	0	0	0	0	0	0	0	0	0
ASQ:SE	186	61	58	39	7	21	0	185	1	0	0	0	1	0	0	0	0	0	0	0	0	0	0	0	0	0	0	0	0	0

Screenings Reported by CFC/CPS/DCFS and Screening Tools Utilized / FY2021 Q3

Screening Tool	Total Screened	Ages (in Months)							Not Referred	Total Referred	Screenings of Children involved with DCFS			# of Children Ages 0 to 3 Referred to										# of Children Ages 3 to 5 Referred to							
		0-11	12-23	24-35	36-47	48-60	61+	In Intact Family Services			Children of Teen Wards	In Foster Care	EI	LEA (ECSE)		PI (center-based)	Child Care Program	HV	Other Services	Multiple Services	Rescreening	LEA (ECSE)	PFA	HS	Child Care Program	HV	Other Services	Multiple Services	Rescreening		
BRIG	15	0	0	2	9	4	0	0	15	0	0	0	0	0	0	0	0	1	0	1	0	13	0	0	0	0	0	0			
DIAL-4	43	0	0	1	26	11	5	0	43	0	0	0	0	1	0	0	0	0	0	0	5	20	0	15	0	0	0	2			
TPBA	77	0	0	20	39	18	0	18	59	0	0	1	0	0	0	0	0	14	1	2	0	38	0	0	0	12	14	8			
CFC #17 Child & Family Connections, ROE of Adams/Pike Counties, 510 Maine St, Ste 615, Quincy, IL 62301 - Kara Hoffman																															
ASQ-3	6	0	2	2	2	0	0	6	0	0	0	0	0	0	0	0	0	0	0	0	0	0	0	0	0	0	0	0			
ASQ:SE	6	0	2	2	2	0	0	6	0	0	0	0	0	0	0	0	0	0	0	0	0	0	0	0	0	0	0				
DIAL	231	0	0	54	119	54	4	162	69	4	0	2	0	2	0	0	0	0	0	14	7	0	0	0	0	0	0	46			
CFC #18 Child & Family Connections, Sangamon Co. Public Health Department, 2833 S Grand Ave, E, Springfield, IL 62703 - Lisa McGlothlin																															
ASQ	6	0	3	3	0	0	0	6	6	0	0	0	0	0	0	0	6	0	0	0	0	0	0	0	0	0	0	0			
ASQ-3	63	0	0	1	45	14	3	0	63	0	0	0	0	0	0	0	0	0	0	0	6	56	0	1	0	0	0	0			
CFC #19 Child & Family Connections, Macon Co. Community Mental Health Board, 132 S Water St, Ste 604, Decatur, IL 62523 - Amy Farmer																															
BRIG	1095	1	9	233	383	195	262	152	944	0	0	1	13	48	0	0	0	0	156	20	2	51	662	0	0	0	34	33	0		
DIAL-4	162	0	0	50	96	16	0	66	96	6	0	4	0	15	0	0	0	0	0	0	2	82	0	0	0	10	2	1			
CFC #20 Child & Family Connections, Community Support Systems, 1901 S 4th St, Ste 209, Effingham, IL 62401 - Rita Wahl																															
BRIG	286	0	0	44	121	49	74	56	234	0	0	0	0	1	0	0	0	0	40	0	4	14	162	17	0	0	3	3	0		
DIAL	2	0	0	0	0	2	0	1	1	0	0	0	0	0	0	0	0	0	0	0	0	0	0	0	0	0	0	1			
CFC #21 Child & Family Connections, Regional Office of Education #13, 4 Eagle Center, Ste 4, O'Fallon, IL 62269 - Terri Kampwerth																															
ASQ	41	6	7	11	11	6	0	29	12	1	0	4	3	0	0	0	0	0	0	0	3	6	0	0	0	1	2	1			
ASQ-3	474	163	121	65	79	41	1	422	51	0	0	2	6	3	0	0	0	0	0	2	4	2	37	0	0	0	4	5	2		
ASQ:SE	75	13	15	23	14	10	0	55	20	1	0	5	5	0	0	0	0	0	0	4	3	7	0	0	0	2	3	1			
ASQ:SE-2	35	0	0	0	25	10	0	3	31	0	0	1	0	0	0	0	0	0	0	0	0	31	0	0	0	3	2	1			
BRIG	2	0	0	0	0	0	2	0	1	0	0	0	0	0	0	0	0	0	0	0	1	1	1	0	0	0	0	0			
DIAL	3	0	0	0	2	1	0	3	0	0	0	0	0	0	0	0	0	0	0	0	0	0	0	0	0	0	0	0			
DIAL-4	96	6	7	13	42	23	4	54	42	1	0	5	3	0	0	0	0	0	0	0	7	38	9	0	0	2	2	5			
PLS-5	2	0	0	0	0	0	2	0	1	0	0	0	0	0	0	0	0	0	0	0	1	1	1	0	0	0	0	0			
Speed DIAL-4	32	0	0	1	21	7	2	22	10	0	0	0	0	0	0	0	0	0	0	0	1	18	9	0	0	0	0	4			
CFC #23 Child & Family Connections, Wabash & Ohio Valley Special Education Dist., 800 S Division St, Norris City, IL 62869 - Charity Heifner																															
ASQ	105	14	21	23	18	29	0	105	0	0	0	0	0	0	0	0	0	0	0	0	0	0	0	0	0	0	0	0			
ASQ-3	0	6	6	4	0	0	0	0	0	0	0	0	0	0	0	0	0	0	0	2	0	0	0	0	0	0	0	0			

Screenings Reported by CFC/CPS/DCFS and Screening Tools Utilized / FY2021 Q3

Screening Tool	Total Screened	Ages (in Months)							Not Referred	Total Referred	Screenings of Children involved with DCFS			# of Children Ages 0 to 3 Referred to										# of Children Ages 3 to 5 Referred to							
											In Intact Family Services	Children of Teen Wards	In Foster Care	EI	LEA (ECSE)	EHS	PI (center-based)	Child Care Program	HV	Other Services	Multiple Services	Rescreening	LEA (ECSE)	PFA	HS	Child Care Program	Other HV Services	Multiple Services	Rescreening		
DIAL-4	305	14	21	30	139	98	2	109	196	0	0	0	0	0	0	0	0	0	0	0	0	15	152	0	0	0	0	0	0	64	
Speed DIAL-4	105	14	21	23	18	29	0	105	0	0	0	0	0	0	0	0	0	0	0	0	0	0	0	0	0	0	0	0	0	0	
CFC #24	Child & Family Connections, Archway, Inc., 2751 W Main, PO Box 1180, Carbondale, IL 62901-1180 - Lindsay Baskin																														
ASQ	57	14	10	22	7	4	0	10	31	0	0	0	0	0	0	17	0	3	0	0	0	0	6	0	0	0	0	0	0	0	
ASQ-3	26	3	5	4	5	9	0	0	26	0	0	0	0	0	0	0	0	12	0	12	12	0	14	0	0	0	0	2	1	1	
ASQ:SE-2	26	3	5	4	5	9	0	0	26	0	0	0	0	0	0	0	0	12	0	12	12	0	14	0	0	0	0	2	1	1	
BRIG	41	10	4	14	7	6	0	15	10	0	0	0	1	1	0	0	0	0	0	0	0	0	8	0	0	0	0	0	0	0	
Hearing	26	10	4	12	0	0	0	10	0	0	0	0	0	0	0	0	0	0	0	0	0	0	0	0	0	0	0	0	0	0	
CFC #25	Child & Family Connections, Options & Advocacy for McHenry Co., 365 Millennium Dr, Ste A, Crystal Lake, IL 60012 - Susan Beckman																														
ASQ	133	23	44	51	11	4	0	3	130	0	0	0	115	0	0	0	0	0	3	0	0	6	3	0	0	0	2	0	1	1	
ASQ-3	53	0	0	1	31	17	0	7	46	0	0	0	0	0	0	0	0	0	0	1	0	0	45	0	0	0	2	3	0	0	
ASQ:SE	8	0	0	0	5	3	0	0	8	0	0	0	0	0	0	0	0	0	0	0	0	4	3	0	0	0	0	0	1	0	
ASQ:SE-2	53	0	0	1	31	17	0	7	46	0	0	0	0	0	0	0	0	0	0	1	0	0	45	0	0	0	2	3	0	0	
CIP	17	0	0	4	12	1	0	3	14	0	0	0	0	0	0	0	0	0	0	0	0	9	5	0	0	0	0	0	0	0	
DIAL-4	44	0	0	5	22	15	2	23	21	0	0	0	0	0	0	0	0	0	0	0	0	4	13	0	0	0	0	0	2	0	
ESP	10	0	0	3	6	1	0	3	7	0	0	0	0	0	0	0	0	0	3	0	0	2	0	0	0	0	2	0	0	0	
PRO-3	10	0	0	3	6	1	0	3	7	0	0	0	0	0	0	0	0	0	3	0	0	2	0	0	0	0	2	0	0	0	